

DATASHEET

RAB2A Rabbit Polyclonal Antibody

CAT. NO. APA14023

KEY FEATURES

Target	RAB2A	Source / Host	Rabbit
Reactivity	Human, Mouse, Rat	Clonality	Polyclonal
Applications	WB	Conjugation	Unconjugated
Form / Buffer	Liquid in 0.42% Potassium phosphate, 0.87% Sodium chloride, pH 7.3, 30% glycerol, and 0.01% sodium azide.		Storage at-20°C

BACKGROUND

The small GTPases Rab are key regulators of intracellular membrane trafficking, from the formation of transport vesicles to their fusion with membranes. Rabs cycle between active GTP-bound and inactive GDP-bound states. In their active state, drive transport of vesicular carriers from donor organelles to acceptor organelles to regulate the membrane traffic that maintains organelle identity and morphology . RAB2A regulates autophagy by promoting autophagosome-lysosome fusion via recruitment of the HOPS endosomal tethering complex; this process involves autophagosomal RAB2A and lysosomal RAB39A recruitment of HOPS subcomplexes VPS39-VPS11 and VPS41-VPS16-VPS18-VPS33A, respectively, which assemble into a functional complex to mediate membrane tethering and SNAREs-driven membrane fusion .

APPLICATION

To ensure optimal assay performance, AREX recommends conducting reagent titration tailored to each testing system for optimal detection results.

WB	1:500 - 1:2000
----	----------------

*Results are sample-specific. Please refer to your local assay conditions and test parameters for reference.

PRODUCT OVERVIEW

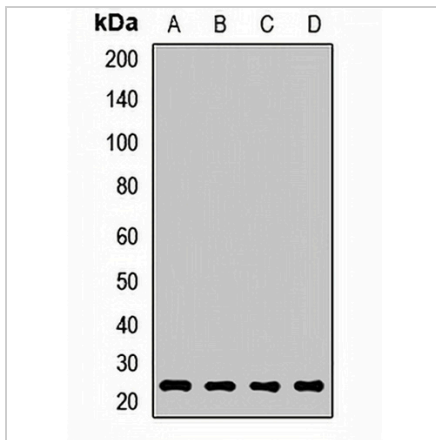
Description	Rabbit polyclonal antibody to RAB2A
Specificity	Recognizes endogenous levels of RAB2A protein.
Antibody Type	Primary antibody
Immunogen	Recombinant fusion protein of human RAB2A
Purification	The antibody was purified by immunogen affinity chromatography.
Molecular Weight	Predicted: 20; Observed: 24 kD
Form/Buffer	Liquid in 0.42% Potassium phosphate, 0.87% Sodium chloride, pH 7.3, 30% glycerol, and 0.01% sodium azide.
Alternative Names	RAB2; Ras-related protein Rab-2A
Gene Symbol	RAB2A
Entrez Gene	5862(Human); 59021(Mouse); 65158(Rat)
SwissProt	P61019(Human); P53994(Mouse); P05712(Rat)

*AREX continuously optimizes our products. Webpage content may not reflect the latest updates. For inquiries, please contact info@arexbio.com or your local distributor.

*Clone Number, Reactivity, Source/Host and Clonality can be found in the product name and Key Features section above.

DATASHEET**RAB2A Rabbit Polyclonal Antibody**

CAT. NO. APA14023

DATA

Western blot analysis of RAB2A expression in HeLa (A), A549 (B), mouse lung (C), rat brain (D) whole cell lysates. (Predicted band size: 20; 23 kD; Observed band size: 24 kD)

STORAGE

Store at 4°C short term. For long term storage, store at -20°C, avoiding freeze/thaw cycles.

NOTE

For Research Use Only. Not for diagnostic, therapeutics, prophylactic or in vivo use.