

**DATASHEET**

**GlyT2 Rabbit Polyclonal Antibody**

CAT. NO. APA14026

**KEY FEATURES**

Target	GlyT2	Source / Host	Rabbit
Reactivity	Human, Mouse, Rat	Clonality	Polyclonal
Applications	WB	Conjugation	Unconjugated
Form / Buffer	Liquid in 0.42% Potassium phosphate, 0.87% Sodium chloride, pH 7.3, 30% glycerol, and 0.01% sodium azide.		Storage at -20°C

**BACKGROUND**

Sodium- and chloride-dependent glycine transporter . Terminates the action of glycine by its high affinity sodium-dependent reuptake into presynaptic terminals . May be responsible for the termination of neurotransmission at strychnine-sensitive glycinergic synapses .

**APPLICATION**

To ensure optimal assay performance, AREX recommends conducting reagent titration tailored to each testing system for optimal detection results.

WB	1:500 - 1:2000
----	----------------

\*Results are sample-specific. Please refer to your local assay conditions and test parameters for reference.

**PRODUCT OVERVIEW**

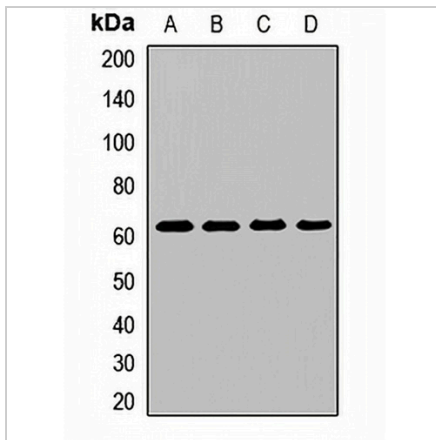
Description	Rabbit polyclonal antibody to GlyT2
Specificity	Recognizes endogenous levels of GlyT2 protein.
Antibody Type	Primary antibody
Immunogen	Recombinant fusion protein of human GlyT2
Purification	The antibody was purified by immunogen affinity chromatography.
Molecular Weight	Predicted: 87 kD; Observed: 60 kD
Form/Buffer	Liquid in 0.42% Potassium phosphate, 0.87% Sodium chloride, pH 7.3, 30% glycerol, and 0.01% sodium azide.
Alternative Names	GLYT2; NET1; Sodium- and chloride-dependent glycine transporter 2; GlyT-2; GlyT2; Solute carrier family 6 member 5
Gene Symbol	SLC6A5
Entrez Gene	9152(Human); 171148(Rat)
SwissProt	Q9Y345(Human); Q761V0(Mouse); P58295(Rat)

\*AREX continuously optimizes our products. Webpage content may not reflect the latest updates. For inquiries, please contact [info@arexbio.com](mailto:info@arexbio.com) or your local distributor.

\*Clone Number, Reactivity, Source/Host and Clonality can be found in the product name and Key Features section above.

**DATASHEET****GlyT2 Rabbit Polyclonal Antibody**

CAT. NO. APA14026

**DATA**

Western blot analysis of GlyT2 expression in SHSY5Y (A), U87 (B), mouse brain (C), rat liver (D) whole cell lysates. (Predicted band size: 87 kD; Observed band size: 60 kD)

**STORAGE**

Store at 4°C short term. For long term storage, store at -20°C, avoiding freeze/thaw cycles.

**NOTE**

For Research Use Only. Not for diagnostic, therapeutics, prophylactic or in vivo use.