

**DATASHEET**

**MIM Rabbit Polyclonal Antibody**

CAT. NO. APA14031

**KEY FEATURES**

|               |   |               |                    |
|---------------|---|---------------|--------------------|
| Target        | MIM   | Source / Host | Rabbit             |
| Reactivity    | Human, Mouse, Rat   | Clonality     | Polyclonal         |
| Applications  | WB  | Conjugation   | Unconjugated       |
| Form / Buffer | Liquid in 0.42% Potassium phosphate, 0.87% Sodium chloride, pH 7.3, 30% glycerol, and 0.01% sodium azide. |               | Storage<br>at-20°C |

**BACKGROUND**

May be related to cancer progression or tumor metastasis in a variety of organ sites, most likely through an interaction with the actin cytoskeleton.

**APPLICATION**

To ensure optimal assay performance, AREX recommends conducting reagent titration tailored to each testing system for optimal detection results.

|    |                |
|----|----------------|
| WB | 1:500 - 1:2000 |
|----|----------------|

\*Results are sample-specific. Please refer to your local assay conditions and test parameters for reference.

**PRODUCT OVERVIEW**

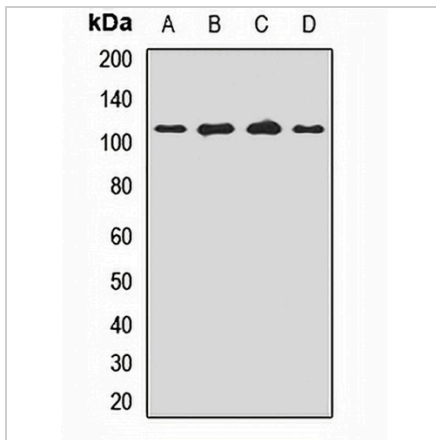
|                   |  |
|-------------------|--|
| Description       | Rabbit polyclonal antibody to MIM  |
| Specificity       | Recognizes endogenous levels of MIM protein.   |
| Antibody Type     | Primary antibody   |
| Immunogen         | Recombinant fusion protein of human MIM  |
| Purification      | The antibody was purified by immunogen affinity chromatography.  |
| Molecular Weight  | Predicted: 50; Observed: 115 kD  |
| Form/Buffer       | Liquid in 0.42% Potassium phosphate, 0.87% Sodium chloride, pH 7.3, 30% glycerol, and 0.01% sodium azide.  |
| Alternative Names | KIAA0429; MIM; Metastasis suppressor protein 1; Metastasis suppressor YGL-1; Missing in metastasis protein |
| Gene Symbol       | MTSS1  |
| Entrez Gene       | 9788(Human); 211401(Mouse)   |
| SwissProt         | O43312(Human); Q8R1S4(Mouse)   |

\*AREX continuously optimizes our products. Webpage content may not reflect the latest updates. For inquiries, please contact [info@arexbio.com](mailto:info@arexbio.com) or your local distributor.

\*Clone Number, Reactivity, Source/Host and Clonality can be found in the product name and Key Features section above.

**DATASHEET****MIM Rabbit Polyclonal Antibody**

CAT. NO. APA14031

**DATA**

Western blot analysis of MIM expression in HeLa (A), HT29 (B), mouse heart (C), rat liver (D) whole cell lysates. (Predicted band size: 50; 79; 82 kD; Observed band size: 115 kD)

**STORAGE**

Store at 4°C short term. For long term storage, store at -20°C, avoiding freeze/thaw cycles.

**NOTE**

For Research Use Only. Not for diagnostic, therapeutics, prophylactic or in vivo use.