

DATASHEET

SPTLC2 Rabbit Polyclonal Antibody

CAT. NO. APA14034

KEY FEATURES

Target	SPTLC2	Source / Host	Rabbit
Reactivity	Human, Mouse, Rat	Clonality	Polyclonal
Applications	WB	Conjugation	Unconjugated
Form / Buffer	Liquid in 0.42% Potassium phosphate, 0.87% Sodium chloride, pH 7.3, 30% glycerol, and 0.01% sodium azide.		Storage at -20°C

BACKGROUND

Component of the serine palmitoyltransferase multisubunit enzyme (SPT) that catalyzes the initial and rate-limiting step in sphingolipid biosynthesis by condensing L-serine and activated acyl-CoA (most commonly palmitoyl-CoA) to form long-chain bases that catalyzes the initial and rate-limiting step in sphingolipid biosynthesis by condensing L-serine and activated acyl-CoA (most commonly palmitoyl-CoA) to form long-chain bases . The SPT complex is composed of SPTLC1, SPTLC2 or SPTLC3 and SPTSSA or SPTSSB. Within this complex, the heterodimer consisting of SPTLC1 and SPTLC2/SPTLC3 forms the catalytic core . The composition of the serine palmitoyltransferase (SPT) complex determines the substrate preference .

APPLICATION

To ensure optimal assay performance, AREX recommends conducting reagent titration tailored to each testing system for optimal detection results.

WB	1:500 - 1:2000
----	----------------

*Results are sample-specific. Please refer to your local assay conditions and test parameters for reference.

PRODUCT OVERVIEW

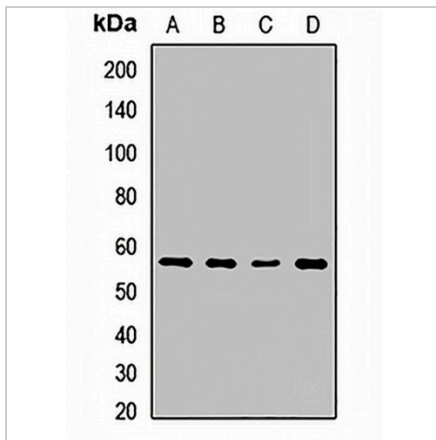
Description	Rabbit polyclonal antibody to SPTLC2
Specificity	Recognizes endogenous levels of SPTLC2 protein.
Antibody Type	Primary antibody
Immunogen	Recombinant fusion protein of human SPTLC2
Purification	The antibody was purified by immunogen affinity chromatography.
Molecular Weight	Predicted: 62 kD; Observed: 58 kD
Form/Buffer	Liquid in 0.42% Potassium phosphate, 0.87% Sodium chloride, pH 7.3, 30% glycerol, and 0.01% sodium azide.
Alternative Names	KIAA0526; LCB2; Serine palmitoyltransferase 2; Long chain base biosynthesis protein 2; LCB 2; Long chain base biosynthesis protein 2a; LCB2a; Serine-palmitoyl-CoA transferase 2; SPT 2
Gene Symbol	SPTLC2
Entrez Gene	9517(Human); 20773(Mouse)
SwissProt	O15270(Human); P97363(Mouse)

*AREX continuously optimizes our products. Webpage content may not reflect the latest updates. For inquiries, please contact info@arexbio.com or your local distributor.

*Clone Number, Reactivity, Source/Host and Clonality can be found in the product name and Key Features section above.

DATASHEET**SPTLC2 Rabbit Polyclonal Antibody**

CAT. NO. APA14034

DATA

Western blot analysis of SPTLC2 expression in U87 (A), mouse liver (B), mouse lung (C), rat kidney (D) whole cell lysates. (Predicted band size: 62 kD; Observed band size: 58 kD)

STORAGE

Store at 4°C short term. For long term storage, store at -20°C, avoiding freeze/thaw cycles.

NOTE

For Research Use Only. Not for diagnostic, therapeutics, prophylactic or in vivo use.