

DATASHEET

ITPRIP Rabbit Polyclonal Antibody

CAT. NO. APA14035

KEY FEATURES

Target	ITPRIP	Source / Host	Rabbit
Reactivity	Human, Mouse	Clonality	Polyclonal
Applications	WB	Conjugation	Unconjugated
Form / Buffer	Liquid in 0.42% Potassium phosphate, 0.87% Sodium chloride, pH 7.3, 30% glycerol, and 0.01% sodium azide.		Storage at -20°C

BACKGROUND

Enhances Ca(2+)-mediated inhibition of inositol 1,4,5-triphosphate receptor (ITPR) Ca(2+) release.

APPLICATION

To ensure optimal assay performance, AREX recommends conducting reagent titration tailored to each testing system for optimal detection results.

WB	1:500 - 1:2000
----	----------------

*Results are sample-specific. Please refer to your local assay conditions and test parameters for reference.

PRODUCT OVERVIEW

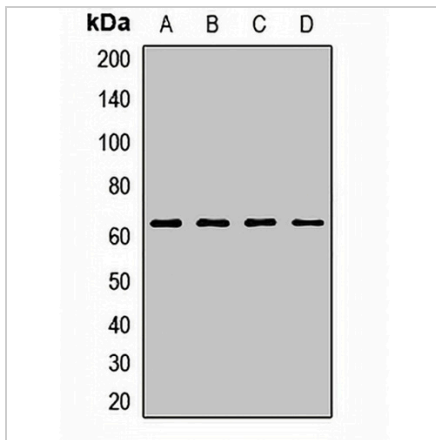
Description	Rabbit polyclonal antibody to ITPRIP
Specificity	Recognizes endogenous levels of ITPRIP protein.
Antibody Type	Primary antibody
Immunogen	Recombinant fusion protein of human ITPRIP
Purification	The antibody was purified by immunogen affinity chromatography.
Molecular Weight	Predicted: 62 kD; Observed: 62 kD
Form/Buffer	Liquid in 0.42% Potassium phosphate, 0.87% Sodium chloride, pH 7.3, 30% glycerol, and 0.01% sodium azide.
Alternative Names	DANGER; KIAA1754; Inositol 1,4,5-trisphosphate receptor-interacting protein; Protein DANGER
Gene Symbol	ITPRIP
Entrez Gene	85450(Human); 414801(Mouse)
SwissProt	Q8IWB1(Human); Q3TNL8(Mouse)

*AREX continuously optimizes our products. Webpage content may not reflect the latest updates. For inquiries, please contact info@arexbio.com or your local distributor.

*Clone Number, Reactivity, Source/Host and Clonality can be found in the product name and Key Features section above.

DATASHEET**ITPRIP Rabbit Polyclonal Antibody**

CAT. NO. APA14035

DATA

Western blot analysis of ITPRIP expression in Hela (A), A549 (B), mouse brain (C), rat ovary (D) whole cell lysates. (Predicted band size: 62 kD; Observed band size: 62 kD)

STORAGE

Store at 4°C short term. For long term storage, store at -20°C, avoiding freeze/thaw cycles.

NOTE

For Research Use Only. Not for diagnostic, therapeutics, prophylactic or in vivo use.