

DATASHEET

CD301 Rabbit Polyclonal Antibody

CAT. NO. APA14041

KEY FEATURES

Target	CD301	Source / Host	Rabbit
Reactivity	Human, Mouse, Rat	Clonality	Polyclonal
Applications	WB	Conjugation	Unconjugated
Form / Buffer	Liquid in 0.42% Potassium phosphate, 0.87% Sodium chloride, pH 7.3, 30% glycerol, and 0.01% sodium azide.		Storage at -20°C

BACKGROUND

C-type lectin receptor involved in recognition of N-acetylgalactosamine (GalNAc)-terminated glycans by myeloid antigen presenting cells (APCs) -terminated glycans by myeloid antigen presenting cells (APCs) . Binds in a Ca(2+)-dependent manner to alpha- and beta-linked GalNAc residues on glycoprotein and glycolipid antigens, including alphaGalNAc- and Galbeta1->3GalNAc-O-Ser/Thr also known as Tn and T antigens, LacdiNAc epitope GalNAcbeta1->4GlcNAc and its derivative GalNAcbeta1->4-(Fucalpha1->3)GlcNAc, O-linked core 5 and 6 glycans, and GM2 and GD2 gangliosides . Acts as a signaling receptor at the interface of APC-T cell interactions.

APPLICATION

To ensure optimal assay performance, AREX recommends conducting reagent titration tailored to each testing system for optimal detection results.

WB	1:500 - 1:2000
----	----------------

*Results are sample-specific. Please refer to your local assay conditions and test parameters for reference.

PRODUCT OVERVIEW

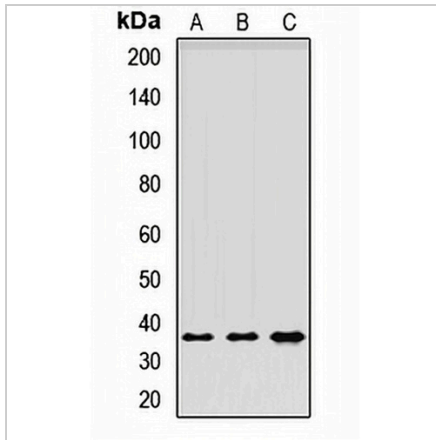
Description	Rabbit polyclonal antibody to CD301
Specificity	Recognizes endogenous levels of CD301 protein.
Antibody Type	Primary antibody
Immunogen	Recombinant fusion protein of human CD301
Purification	The antibody was purified by immunogen affinity chromatography.
Molecular Weight	Predicted: 28; Observed: 38 kD
Form/Buffer	Liquid in 0.42% Potassium phosphate, 0.87% Sodium chloride, pH 7.3, 30% glycerol, and 0.01% sodium azide.
Alternative Names	CLECSF13; CLECSF14; HML; C-type lectin domain family 10 member A; C-type lectin superfamily member 14; Macrophage lectin 2; CD301
Gene Symbol	CLEC10A
Entrez Gene	10462(Human); 17312(Mouse)
SwissProt	Q8IUN9(Human); P49300(Mouse); P49301(Rat)

*AREX continuously optimizes our products. Webpage content may not reflect the latest updates. For inquiries, please contact info@arexbio.com or your local distributor.

*Clone Number, Reactivity, Source/Host and Clonality can be found in the product name and Key Features section above.

DATASHEET**CD301 Rabbit Polyclonal Antibody**

CAT. NO. APA14041

DATA

Western blot analysis of CD301 expression in K562 (A), Raji (B), mouse testis (C) whole cell lysates. (Predicted band size: 28; 32; 35 kD; Observed band size: 38 kD)

STORAGE

Store at 4°C short term. For long term storage, store at -20°C, avoiding freeze/thaw cycles.

NOTE

For Research Use Only. Not for diagnostic, therapeutics, prophylactic or in vivo use.