

DATASHEET

Bet1L Rabbit Polyclonal Antibody

CAT. NO. APA14043

KEY FEATURES

Target	Bet1L	Source / Host	Rabbit
Reactivity	Human, Mouse, Rat	Clonality	Polyclonal
Applications	WB	Conjugation	Unconjugated
Form / Buffer	Liquid in 0.42% Potassium phosphate, 0.87% Sodium chloride, pH 7.3, 30% glycerol, and 0.01% sodium azide.		Storage at -20°C

BACKGROUND

Vesicle SNARE required for targeting and fusion of retrograde transport vesicles with the Golgi complex. Required for the integrity of the Golgi complex .

APPLICATION

To ensure optimal assay performance, AREX recommends conducting reagent titration tailored to each testing system for optimal detection results.

WB	1:500 - 1:2000
----	----------------

*Results are sample-specific. Please refer to your local assay conditions and test parameters for reference.

PRODUCT OVERVIEW

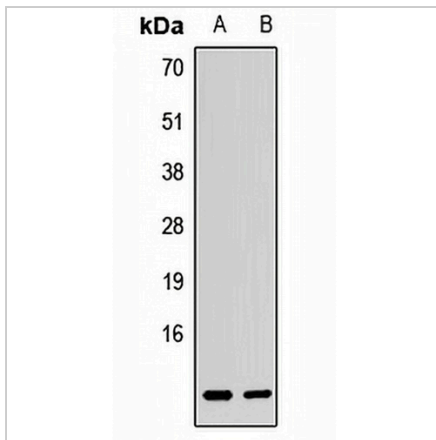
Description	Rabbit polyclonal antibody to Bet1L
Specificity	Recognizes endogenous levels of Bet1L protein.
Antibody Type	Primary antibody
Immunogen	Recombinant fusion protein of human Bet1L
Purification	The antibody was purified by immunogen affinity chromatography.
Molecular Weight	Predicted: 12 kD; Observed: 14 kD
Form/Buffer	Liquid in 0.42% Potassium phosphate, 0.87% Sodium chloride, pH 7.3, 30% glycerol, and 0.01% sodium azide.
Alternative Names	GS15; BET1-like protein; Golgi SNARE with a size of 15 kDa; GOS-15; GS15; Vesicle transport protein GOS15
Gene Symbol	BET1L
Entrez Gene	51272(Human); 54399(Mouse); 54400(Rat)
SwissProt	Q9NYM9(Human); O35153(Mouse); O35152(Rat)

*AREX continuously optimizes our products. Webpage content may not reflect the latest updates. For inquiries, please contact info@arexbio.com or your local distributor.

*Clone Number, Reactivity, Source/Host and Clonality can be found in the product name and Key Features section above.

DATASHEET**Bet1L Rabbit Polyclonal Antibody**

CAT. NO. APA14043

DATA

Western blot analysis of Bet1L expression in Jurkat (A), K562 (B) whole cell lysates. (Predicted band size: 12 kD; Observed band size: 14 kD)

STORAGE

Store at 4°C short term. For long term storage, store at -20°C, avoiding freeze/thaw cycles.

NOTE

For Research Use Only. Not for diagnostic, therapeutics, prophylactic or in vivo use.