

DATASHEET

Synaptopodin Rabbit Polyclonal Antibody

CAT. NO. APA14044

KEY FEATURES

| | | | |
|---------------|---|---------------|--------------------|
| Target | Synaptopodin | Source / Host | Rabbit |
| Reactivity | Human, Mouse, Rat | Clonality | Polyclonal |
| Applications | WB | Conjugation | Unconjugated |
| Form / Buffer | Liquid in 0.42% Potassium phosphate, 0.87% Sodium chloride, pH 7.3, 30% glycerol, and 0.01% sodium azide. | | Storage at-20°C |

BACKGROUND

Actin-associated protein that may play a role in modulating actin-based shape and motility of dendritic spines and renal podocyte foot processes. Seems to be essential for the formation of spine apparatuses in spines of telencephalic neurons, which is involved in synaptic plasticity .

APPLICATION

To ensure optimal assay performance, AREX recommends conducting reagent titration tailored to each testing system for optimal detection results.

| | |
|----|----------------|
| WB | 1:500 - 1:2000 |
|----|----------------|

*Results are sample-specific. Please refer to your local assay conditions and test parameters for reference.

PRODUCT OVERVIEW

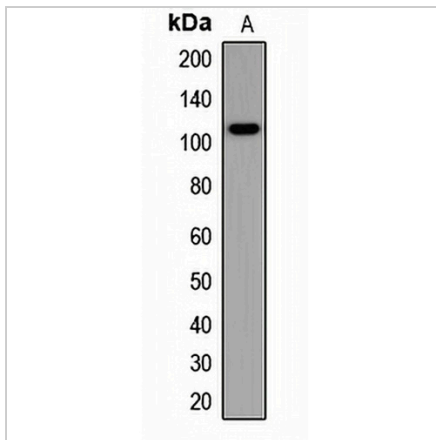
| | |
|-------------------|---|
| Description | Rabbit polyclonal antibody to Synaptopodin |
| Specificity | Recognizes endogenous levels of Synaptopodin protein. |
| Antibody Type | Primary antibody |
| Immunogen | KLH-conjugated synthetic peptide of human Synaptopodin |
| Purification | The antibody was purified by immunogen affinity chromatography. |
| Molecular Weight | Predicted: 73; Observed: 115 kD |
| Form/Buffer | Liquid in 0.42% Potassium phosphate, 0.87% Sodium chloride, pH 7.3, 30% glycerol, and 0.01% sodium azide. |
| Alternative Names | KIAA1029; Synaptopodin |
| Gene Symbol | SYNPO |
| Entrez Gene | 11346(Human) |
| SwissProt | Q8N3V7(Human); Q8CC35(Mouse) |

*AREX continuously optimizes our products. Webpage content may not reflect the latest updates. For inquiries, please contact info@arexbio.com or your local distributor.

*Clone Number, Reactivity, Source/Host and Clonality can be found in the product name and Key Features section above.

DATASHEET**Synaptopodin Rabbit Polyclonal Antibody**

CAT. NO. APA14044

DATA

Western blot analysis of Synaptopodin expression in mouse brain (A) whole cell lysates.
(Predicted band size: 73; 96; 99 kD; Observed band size: 115 kD)

STORAGE

Store at 4°C short term. For long term storage, store at -20°C, avoiding freeze/thaw cycles.

NOTE

For Research Use Only. Not for diagnostic, therapeutics, prophylactic or in vivo use.