

DATASHEET

MBD2 Rabbit Polyclonal Antibody

CAT. NO. APA14045

KEY FEATURES

Target	MBD2	Source / Host	Rabbit
Reactivity	Human, Mouse, Rat	Clonality	Polyclonal
Applications	WB	Conjugation	Unconjugated
Form / Buffer	Liquid in 0.42% Potassium phosphate, 0.87% Sodium chloride, pH 7.3, 30% glycerol, and 0.01% sodium azide.		Storage at -20°C

BACKGROUND

Binds CpG islands in promoters where the DNA is methylated at position 5 of cytosine within CpG dinucleotides . Binds hemimethylated DNA as well . Recruits histone deacetylases and DNA methyltransferases to chromatin . Acts as a component of the histone deacetylase NuRD complex which participates in the remodeling of chromatin . Acts as a transcriptional repressor and plays a role in gene silencing . Functions as a scaffold protein, targeting GATAD2A and GATAD2B to chromatin to promote repression . May enhance the activation of some unmethylated cAMP-responsive promoters .

APPLICATION

To ensure optimal assay performance, AREX recommends conducting reagent titration tailored to each testing system for optimal detection results.

WB	1:500 - 1:2000
----	----------------

*Results are sample-specific. Please refer to your local assay conditions and test parameters for reference.

PRODUCT OVERVIEW

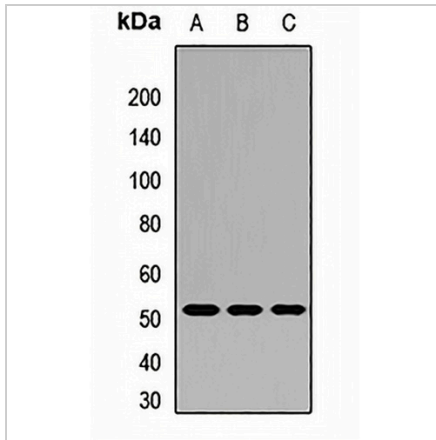
Description	Rabbit polyclonal antibody to MBD2
Specificity	Recognizes endogenous levels of MBD2 protein.
Antibody Type	Primary antibody
Immunogen	KLH-conjugated synthetic peptide of human MBD2
Purification	The antibody was purified by immunogen affinity chromatography.
Molecular Weight	Predicted: 31; Observed: 53 kD
Form/Buffer	Liquid in 0.42% Potassium phosphate, 0.87% Sodium chloride, pH 7.3, 30% glycerol, and 0.01% sodium azide.
Alternative Names	Methyl-CpG-binding domain protein 2; Demethylase; DMTase; Methyl-CpG-binding protein MBD2
Gene Symbol	MBD2
Entrez Gene	8932(Human); 17191(Mouse)
SwissProt	Q9UBB5(Human); Q9Z2E1(Mouse)

*AREX continuously optimizes our products. Webpage content may not reflect the latest updates. For inquiries, please contact info@arexbio.com or your local distributor.

*Clone Number, Reactivity, Source/Host and Clonality can be found in the product name and Key Features section above.

DATASHEET**MBD2 Rabbit Polyclonal Antibody**

CAT. NO. APA14045

DATA

Western blot analysis of MBD2 expression in HeLa (A), mouse heart (B), rat brain (C) whole cell lysates. (Predicted band size: 31; 43 kD; Observed band size: 53 kD)

STORAGE

Store at 4°C short term. For long term storage, store at -20°C, avoiding freeze/thaw cycles.

NOTE

For Research Use Only. Not for diagnostic, therapeutics, prophylactic or in vivo use.