

**DATASHEET**

**GLMN Rabbit Polyclonal Antibody**

CAT. NO. APA14047

**KEY FEATURES**

Target	GLMN	Source / Host	Rabbit
Reactivity	Human, Mouse	Clonality	Polyclonal
Applications	WB	Conjugation	Unconjugated
Form / Buffer	Liquid in 0.42% Potassium phosphate, 0.87% Sodium chloride, pH 7.3, 30% glycerol, and 0.01% sodium azide.		Storage at -20°C

**BACKGROUND**

Regulatory component of cullin-RING-based SCF (SKP1-Cullin-F-box protein) E3 ubiquitin-protein ligase complexes E3 ubiquitin-protein ligase complexes . Inhibits E3 ubiquitin ligase activity by binding to RBX1 (via RING domain) and inhibiting its interaction with the E2 ubiquitin-conjugating enzyme CDC34 . Inhibits RBX1-mediated neddylation of CUL1 . Required for normal stability and normal cellular levels of key components of SCF ubiquitin ligase complexes, including FBXW7, RBX1, CUL1, CUL2, CUL3, CUL4A, and thereby contributes to the regulation of CCNE1 and MYC levels . Essential for normal development of the vasculature . Contributes to the regulation of RPS6KB1 phosphorylation .

**APPLICATION**

To ensure optimal assay performance, AREX recommends conducting reagent titration tailored to each testing system for optimal detection results.

WB	1:500 - 1:2000
----	----------------

\*Results are sample-specific. Please refer to your local assay conditions and test parameters for reference.

**PRODUCT OVERVIEW**

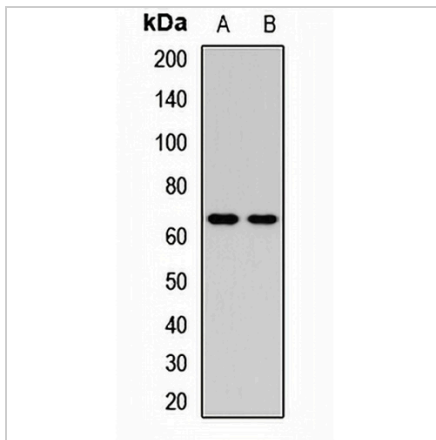
Description	Rabbit polyclonal antibody to GLMN
Specificity	Recognizes endogenous levels of GLMN protein.
Antibody Type	Primary antibody
Immunogen	Recombinant fusion protein of human GLMN
Purification	The antibody was purified by immunogen affinity chromatography.
Molecular Weight	Predicted: 48; Observed: 68 kD
Form/Buffer	Liquid in 0.42% Potassium phosphate, 0.87% Sodium chloride, pH 7.3, 30% glycerol, and 0.01% sodium azide.
Alternative Names	FAP48; FAP68; VMGLOM; Glomulin; FK506-binding protein-associated protein; FAP; FKBP-associated protein
Gene Symbol	GLMN
Entrez Gene	11146(Human); 170823(Mouse)
SwissProt	Q92990(Human); Q8BZM1(Mouse)

\*AREX continuously optimizes our products. Webpage content may not reflect the latest updates. For inquiries, please contact [info@arexbio.com](mailto:info@arexbio.com) or your local distributor.

\*Clone Number, Reactivity, Source/Host and Clonality can be found in the product name and Key Features section above.

**DATASHEET****GLMN Rabbit Polyclonal Antibody**

CAT. NO. APA14047

**DATA**

Western blot analysis of GLMN expression in HepG2 (A), mouse testis (B) whole cell lysates. (Predicted band size: 48; 68 kD; Observed band size: 68 kD)

**STORAGE**

Store at 4°C short term. For long term storage, store at -20°C, avoiding freeze/thaw cycles.

**NOTE**

For Research Use Only. Not for diagnostic, therapeutics, prophylactic or in vivo use.