

DATASHEET

OPLAH Rabbit Polyclonal Antibody

CAT. NO. APA14051

KEY FEATURES

Target	OPLAH	Source / Host	Rabbit
Reactivity	Human, Mouse, Rat	Clonality	Polyclonal
Applications	WB	Conjugation	Unconjugated
Form / Buffer	Liquid in 0.42% Potassium phosphate, 0.87% Sodium chloride, pH 7.3, 30% glycerol, and 0.01% sodium azide.		Storage at -20°C

BACKGROUND

Catalyzes the cleavage of 5-oxo-L-proline to form L-glutamate coupled to the hydrolysis of ATP to ADP and inorganic phosphate.

APPLICATION

To ensure optimal assay performance, AREX recommends conducting reagent titration tailored to each testing system for optimal detection results.

WB	1:500 - 1:2000
----	----------------

*Results are sample-specific. Please refer to your local assay conditions and test parameters for reference.

PRODUCT OVERVIEW

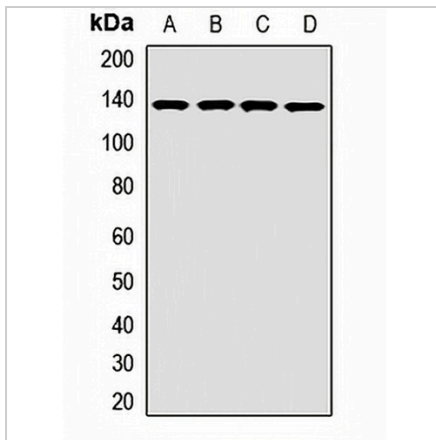
Description	Rabbit polyclonal antibody to OPLAH
Specificity	Recognizes endogenous levels of OPLAH protein.
Antibody Type	Primary antibody
Immunogen	Recombinant fusion protein of human OPLAH
Purification	The antibody was purified by immunogen affinity chromatography.
Molecular Weight	Predicted: 137 kD; Observed: 137 kD
Form/Buffer	Liquid in 0.42% Potassium phosphate, 0.87% Sodium chloride, pH 7.3, 30% glycerol, and 0.01% sodium azide.
Alternative Names	5-oxoprolinase; 5-oxo-L-prolinase; 5-OPase; Pyroglutamase
Gene Symbol	OPLAH
Entrez Gene	26873(Human); 75475(Mouse); 116684(Rat)
SwissProt	O14841(Human); Q8K010(Mouse); P97608(Rat)

*AREX continuously optimizes our products. Webpage content may not reflect the latest updates. For inquiries, please contact info@arexbio.com or your local distributor.

*Clone Number, Reactivity, Source/Host and Clonality can be found in the product name and Key Features section above.

DATASHEET**OPLAH Rabbit Polyclonal Antibody**

CAT. NO. APA14051

DATA

Western blot analysis of OPLAH expression in A549 (A), HT29 (B), mouse liver (C), rat kidney (D) whole cell lysates. (Predicted band size: 137 kD; Observed band size: 137 kD)

STORAGE

Store at 4°C short term. For long term storage, store at -20°C, avoiding freeze/thaw cycles.

NOTE

For Research Use Only. Not for diagnostic, therapeutics, prophylactic or in vivo use.