

DATASHEET

PIBF Rabbit Polyclonal Antibody

CAT. NO. APA14052

KEY FEATURES

Target	PIBF	Source / Host	Rabbit
Reactivity	Human	Clonality	Polyclonal
Applications	WB	Conjugation	Unconjugated
Form / Buffer	Liquid in 0.42% Potassium phosphate, 0.87% Sodium chloride, pH 7.3, 30% glycerol, and 0.01% sodium azide.		Storage at -20°C

BACKGROUND

Plays a role in ciliogenesis.

APPLICATION

To ensure optimal assay performance, AREX recommends conducting reagent titration tailored to each testing system for optimal detection results.

WB	1:500 - 1:2000
----	----------------

*Results are sample-specific. Please refer to your local assay conditions and test parameters for reference.

PRODUCT OVERVIEW

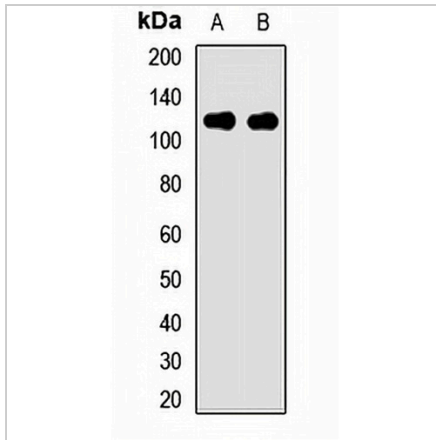
Description	Rabbit polyclonal antibody to PIBF
Specificity	Recognizes endogenous levels of PIBF protein.
Antibody Type	Primary antibody
Immunogen	Recombinant fusion protein of human PIBF
Purification	The antibody was purified by immunogen affinity chromatography.
Molecular Weight	Predicted: 12; Observed: 110 kD
Form/Buffer	Liquid in 0.42% Potassium phosphate, 0.87% Sodium chloride, pH 7.3, 30% glycerol, and 0.01% sodium azide.
Alternative Names	C13orf24; PIBF; Progesterone-induced-blocking factor 1
Gene Symbol	PIBF1
Entrez Gene	10464(Human)
SwissProt	Q8WXW3(Human)

*AREX continuously optimizes our products. Webpage content may not reflect the latest updates. For inquiries, please contact info@arexbio.com or your local distributor.

*Clone Number, Reactivity, Source/Host and Clonality can be found in the product name and Key Features section above.

DATASHEET**PIBF Rabbit Polyclonal Antibody**

CAT. NO. APA14052

DATA

Western blot analysis of PIBF expression in SKOV3 (A), LO2 (B) whole cell lysates.
(Predicted band size: 12; 25; 35; 89 kD; Observed band size: 110 kD)

STORAGE

Store at 4°C short term. For long term storage, store at -20°C, avoiding freeze/thaw cycles.

NOTE

For Research Use Only. Not for diagnostic, therapeutics, prophylactic or in vivo use.