

## DATASHEET

# POLR1B Rabbit Polyclonal Antibody

CAT. NO. APA14053

### KEY FEATURES

Target	POLR1B	Source / Host	Rabbit
Reactivity	Human, Mouse, Rat	Clonality	Polyclonal
Applications	WB	Conjugation	Unconjugated
Form / Buffer	Liquid in 0.42% Potassium phosphate, 0.87% Sodium chloride, pH 7.3, 30% glycerol, and 0.01% sodium azide.		Storage at-20°C

### BACKGROUND

Catalytic core component of RNA polymerase I (Pol I), a DNA-dependent RNA polymerase which synthesizes ribosomal RNA precursors using the four ribonucleoside triphosphates as substrates. Transcribes 47S pre-rRNAs from multicopy rRNA gene clusters, giving rise to 5.8S, 18S and 28S ribosomal RNAs, a DNA-dependent RNA polymerase which synthesizes ribosomal RNA precursors using the four ribonucleoside triphosphates as substrates. Transcribes 47S pre-rRNAs from multicopy rRNA gene clusters, giving rise to 5.8S, 18S and 28S ribosomal RNAs. Pol I-mediated transcription cycle proceeds through transcription initiation, transcription elongation and transcription termination stages.

### APPLICATION

To ensure optimal assay performance, AREX recommends conducting reagent titration tailored to each testing system for optimal detection results.

WB	1:500 - 1:2000
----	----------------

\*Results are sample-specific. Please refer to your local assay conditions and test parameters for reference.

### PRODUCT OVERVIEW

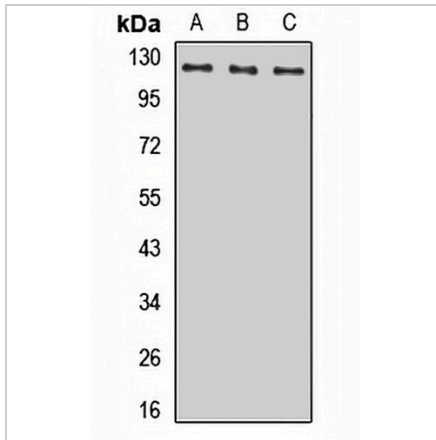
Description	Rabbit polyclonal antibody to POLR1B
Specificity	Recognizes endogenous levels of POLR1B protein.
Antibody Type	Primary antibody
Immunogen	Recombinant fusion protein of human POLR1B
Purification	The antibody was purified by immunogen affinity chromatography.
Molecular Weight	Predicted: 104; Observed: 128 kD
Form/Buffer	Liquid in 0.42% Potassium phosphate, 0.87% Sodium chloride, pH 7.3, 30% glycerol, and 0.01% sodium azide.
Alternative Names	DNA-directed RNA polymerase I subunit RPA2; RNA polymerase I subunit 2; DNA-directed RNA polymerase I 135 kDa polypeptide; RPA135
Gene Symbol	POLR1B
Entrez Gene	84172(Human); 20017(Mouse); 83582(Rat)
SwissProt	Q9H9Y6(Human); P70700(Mouse); O54888(Rat)

\*AREX continuously optimizes our products. Webpage content may not reflect the latest updates. For inquiries, please contact [info@arexbio.com](mailto:info@arexbio.com) or your local distributor.

\*Clone Number, Reactivity, Source/Host and Clonality can be found in the product name and Key Features section above.

**DATASHEET****POLR1B Rabbit Polyclonal Antibody**

CAT. NO. APA14053

**DATA**

Western blot analysis of POLR1B expression in HeLa (A), HT29 (B), mouse spleen (C) whole cell lysates. (Predicted band size: 104; 107; 121; 128; 132 kD; Observed band size: 128 kD)

**STORAGE**

Store at 4°C short term. For long term storage, store at -20°C, avoiding freeze/thaw cycles.

**NOTE**

For Research Use Only. Not for diagnostic, therapeutics, prophylactic or in vivo use.