

DATASHEET

GIGYF2 Rabbit Polyclonal Antibody

CAT. NO. APA14057

KEY FEATURES

Target	GIGYF2	Source / Host	Rabbit
Reactivity	Human, Mouse	Clonality	Polyclonal
Applications	WB, IHC	Conjugation	Unconjugated
Form / Buffer	Liquid in 0.42% Potassium phosphate, 0.87% Sodium chloride, pH 7.3, 30% glycerol, and 0.01% sodium azide.		Storage at -20°C

BACKGROUND

Key component of the 4EHP-GYF2 complex, a multiprotein complex that acts as a repressor of translation initiation . In the 4EHP-GYF2 complex, acts as a factor that bridges EIF4E2 to ZFP36/TTP, linking translation repression with mRNA decay . Also recruits and bridges the association of the 4EHP complex with the decapping effector protein DDX6, which is required for the ZFP36/TTP-mediated down-regulation of AU-rich mRNA . May act cooperatively with GRB10 to regulate tyrosine kinase receptor signaling, including IGF1 and insulin receptors . In association with EIF4E2, assists ribosome-associated quality control (RQC) by sequestering the mRNA cap, blocking ribosome initiation and decreasing the translational load on problematic messages.

APPLICATION

To ensure optimal assay performance, AREX recommends conducting reagent titration tailored to each testing system for optimal detection results.

WB	1:500 - 1:2000
IHC	1:50 - 1:200

*Results are sample-specific. Please refer to your local assay conditions and test parameters for reference.

PRODUCT OVERVIEW

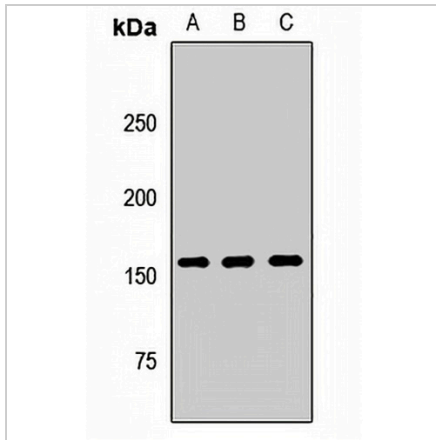
Description	Rabbit polyclonal antibody to GIGYF2
Specificity	Recognizes endogenous levels of GIGYF2 protein.
Antibody Type	Primary antibody
Immunogen	Recombinant fusion protein of human GIGYF2
Purification	The antibody was purified by immunogen affinity chromatography.
Molecular Weight	Predicted: 148; Observed: 150 kD
Form/Buffer	Liquid in 0.42% Potassium phosphate, 0.87% Sodium chloride, pH 7.3, 30% glycerol, and 0.01% sodium azide.
Alternative Names	KIAA0642; PERQ2; TNRC15; PERQ amino acid-rich with GYF domain-containing protein 2; GRB10-interacting GYF protein 2; Trinucleotide repeat-containing gene 15 protein
Gene Symbol	GIGYF2
Entrez Gene	26058(Human)
SwissProt	Q6Y7W6(Human)

*AREX continuously optimizes our products. Webpage content may not reflect the latest updates. For inquiries, please contact info@arexbio.com or your local distributor.

*Clone Number, Reactivity, Source/Host and Clonality can be found in the product name and Key Features section above.

DATASHEET**GIGYF2 Rabbit Polyclonal Antibody**

CAT. NO. APA14057

DATA**STORAGE**

Store at 4°C short term. For long term storage, store at -20°C, avoiding freeze/thaw cycles.

NOTE

For Research Use Only. Not for diagnostic, therapeutics, prophylactic or in vivo use.