

DATASHEET

Sel-1L Rabbit Polyclonal Antibody

CAT. NO. APA14059

KEY FEATURES

Target	Sel-1L	Source / Host	Rabbit
Reactivity	Human, Mouse, Rat	Clonality	Polyclonal
Applications	WB, IF/ICC	Conjugation	Unconjugated
Form / Buffer	Liquid in 0.42% Potassium phosphate, 0.87% Sodium chloride, pH 7.3, 30% glycerol, and 0.01% sodium azide.		Storage at-20°C

BACKGROUND

Plays a role in the endoplasmic reticulum quality control (ERQC) system also called ER-associated degradation (ERAD) involved in ubiquitin-dependent degradation of misfolded endoplasmic reticulum proteins system also called ER-associated degradation (ERAD) involved in ubiquitin-dependent degradation of misfolded endoplasmic reticulum proteins . Enhances SYVN1 stability. Plays a role in LPL maturation and secretion. Required for normal differentiation of the pancreas epithelium, and for normal exocrine function and survival of pancreatic cells. May play a role in Notch signaling.

APPLICATION

To ensure optimal assay performance, AREX recommends conducting reagent titration tailored to each testing system for optimal detection results.

WB	1:500 - 1:2000
IF/ICC	1:50 - 1:200

*Results are sample-specific. Please refer to your local assay conditions and test parameters for reference.

PRODUCT OVERVIEW

Description	Rabbit polyclonal antibody to Sel-1L
Specificity	Recognizes endogenous levels of Sel-1L protein.
Antibody Type	Primary antibody
Immunogen	Recombinant fusion protein of human Sel-1L
Purification	The antibody was purified by immunogen affinity chromatography.
Molecular Weight	Predicted: 33; Observed: 102 kD
Form/Buffer	Liquid in 0.42% Potassium phosphate, 0.87% Sodium chloride, pH 7.3, 30% glycerol, and 0.01% sodium azide.
Alternative Names	TSA305; Protein sel-1 homolog 1; Suppressor of lin-12-like protein 1; Sel-1L
Gene Symbol	SEL1L
Entrez Gene	6400(Human); 20338(Mouse); 314352(Rat)
SwissProt	Q9UBV2(Human); Q9Z2G6(Mouse); Q80Z70(Rat)

*AREX continuously optimizes our products. Webpage content may not reflect the latest updates. For inquiries, please contact info@arexbio.com or your local distributor.

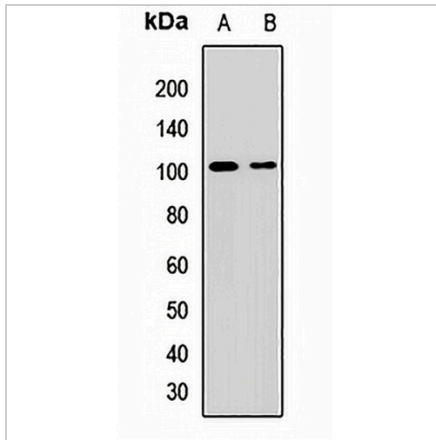
*Clone Number, Reactivity, Source/Host and Clonality can be found in the product name and Key Features section above.

DATASHEET

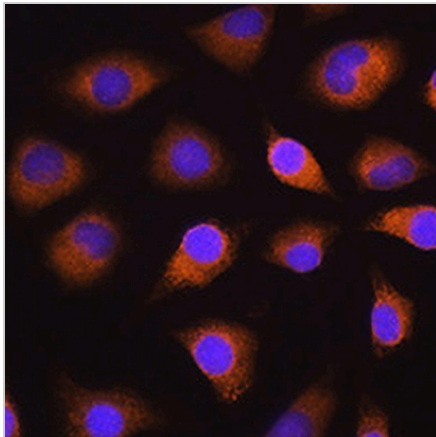
Sel-1L Rabbit Polyclonal Antibody

CAT. NO. APA14059

DATA



Western blot analysis of Sel-1L expression in HepG2 (A), mouse kidney (B) whole cell lysates. (Predicted band size: 33; 88 kD; Observed band size: 102 kD)



Immunofluorescent analysis of Sel-1L staining in L929 cells. Formalin-fixed cells were permeabilized with 0.1% Triton X-100 in TBS for 5-10 minutes and blocked with 3% BSA-PBS for 30 minutes at room temperature. Cells were probed with the primary antibody in 3% BSA-PBS and incubated overnight at 4 °C in a humidified chamber. Cells were washed with PBST and incubated with a AREX® Fluor 594-conjugated secondary antibody (red) in PBS at room temperature in the dark. DAPI was used to stain the cell nuclei (blue).

STORAGE

Store at 4°C short term. For long term storage, store at -20°C, avoiding freeze/thaw cycles.

NOTE

For Research Use Only. Not for diagnostic, therapeutics, prophylactic or in vivo use.