

**DATASHEET**

**SEC23A Rabbit Polyclonal Antibody**

CAT. NO. APA14064

**KEY FEATURES**

Target	SEC23A	Source / Host	Rabbit
Reactivity	Human, Mouse, Rat	Clonality	Polyclonal
Applications	WB	Conjugation	Unconjugated
Form / Buffer	Liquid in 0.42% Potassium phosphate, 0.87% Sodium chloride, pH 7.3, 30% glycerol, and 0.01% sodium azide.		Storage at -20°C

**BACKGROUND**

Component of the coat protein complex II (COPII) which promotes the formation of transport vesicles from the endoplasmic reticulum (ER). The coat has two main functions, the physical deformation of the endoplasmic reticulum membrane into vesicles and the selection of cargo molecules for their transport to the Golgi complex. Required for the translocation of insulin-induced glucose transporter SLC2A4/GLUT4 to the cell membrane .

**APPLICATION**

To ensure optimal assay performance, AREX recommends conducting reagent titration tailored to each testing system for optimal detection results.

WB	1:500 - 1:2000
----	----------------

\*Results are sample-specific. Please refer to your local assay conditions and test parameters for reference.

**PRODUCT OVERVIEW**

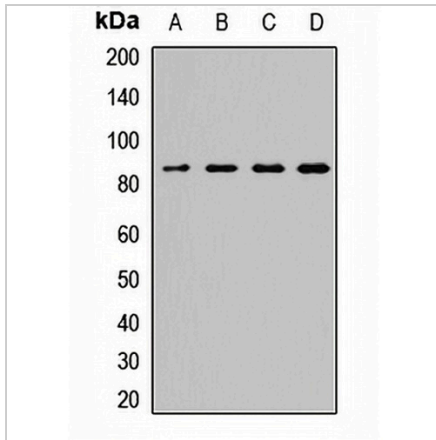
Description	Rabbit polyclonal antibody to SEC23A
Specificity	Recognizes endogenous levels of SEC23A protein.
Antibody Type	Primary antibody
Immunogen	Recombinant fusion protein of human SEC23A
Purification	The antibody was purified by immunogen affinity chromatography.
Molecular Weight	Predicted: 63; Observed: 86 kD
Form/Buffer	Liquid in 0.42% Potassium phosphate, 0.87% Sodium chloride, pH 7.3, 30% glycerol, and 0.01% sodium azide.
Alternative Names	Protein transport protein Sec23A; SEC23-related protein A
Gene Symbol	SEC23A
Entrez Gene	10484(Human); 20334(Mouse)
SwissProt	Q15436(Human); Q01405(Mouse)

\*AREX continuously optimizes our products. Webpage content may not reflect the latest updates. For inquiries, please contact [info@arexbio.com](mailto:info@arexbio.com) or your local distributor.

\*Clone Number, Reactivity, Source/Host and Clonality can be found in the product name and Key Features section above.

**DATASHEET****SEC23A Rabbit Polyclonal Antibody**

CAT. NO. APA14064

**DATA**

Western blot analysis of SEC23A expression in HeLa (A), HT29 (B), mouse liver (C), rat brain (D) whole cell lysates. (Predicted band size: 63; 86 kD; Observed band size: 86 kD)

**STORAGE**

Store at 4°C short term. For long term storage, store at -20°C, avoiding freeze/thaw cycles.

**NOTE**

For Research Use Only. Not for diagnostic, therapeutics, prophylactic or in vivo use.