

DATASHEET

BAF60B Rabbit Polyclonal Antibody

CAT. NO. APA14065

KEY FEATURES

Target	BAF60B	Source / Host	Rabbit
Reactivity	Human, Mouse, Rat	Clonality	Polyclonal
Applications	WB	Conjugation	Unconjugated
Form / Buffer	Liquid in 0.42% Potassium phosphate, 0.87% Sodium chloride, pH 7.3, 30% glycerol, and 0.01% sodium azide.		Storage at -20°C

BACKGROUND

Involved in transcriptional activation and repression of select genes by chromatin remodeling (alteration of DNA-nucleosome topology). Component of SWI/SNF chromatin remodeling complexes that carry out key enzymatic activities, changing chromatin structure by altering DNA-histone contacts within a nucleosome in an ATP-dependent manner. Component of SWI/SNF chromatin remodeling complexes that carry out key enzymatic activities, changing chromatin structure by altering DNA-histone contacts within a nucleosome in an ATP-dependent manner. Critical regulator of myeloid differentiation, controlling granulocytopenesis and the expression of genes involved in neutrophil granule formation.

APPLICATION

To ensure optimal assay performance, AREX recommends conducting reagent titration tailored to each testing system for optimal detection results.

WB	1:500 - 1:2000
----	----------------

*Results are sample-specific. Please refer to your local assay conditions and test parameters for reference.

PRODUCT OVERVIEW

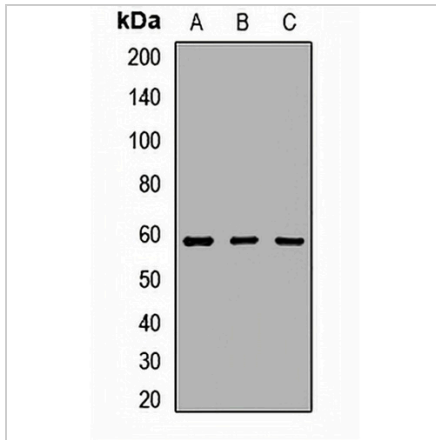
Description	Rabbit polyclonal antibody to BAF60B
Specificity	Recognizes endogenous levels of BAF60B protein.
Antibody Type	Primary antibody
Immunogen	Recombinant fusion protein of human BAF60B
Purification	The antibody was purified by immunogen affinity chromatography.
Molecular Weight	Predicted: 55; Observed: 59 kD
Form/Buffer	Liquid in 0.42% Potassium phosphate, 0.87% Sodium chloride, pH 7.3, 30% glycerol, and 0.01% sodium azide.
Alternative Names	BAF60B; SWI/SNF-related matrix-associated actin-dependent regulator of chromatin subfamily D member 2; 60 kDa BRG-1/Brm-associated factor subunit B; BRG1-associated factor 60B; BAF60B
Gene Symbol	SMARCD2
Entrez Gene	6603(Human); 83796(Mouse); 83833(Rat)
SwissProt	Q92925(Human); Q99JR8(Mouse); O54772(Rat)

*AREX continuously optimizes our products. Webpage content may not reflect the latest updates. For inquiries, please contact info@arexbio.com or your local distributor.

*Clone Number, Reactivity, Source/Host and Clonality can be found in the product name and Key Features section above.

DATASHEET**BAF60B Rabbit Polyclonal Antibody**

CAT. NO. APA14065

DATA

Western blot analysis of BAF60B expression in HeLa (A), Jurkat (B), mouse spleen (C) whole cell lysates. (Predicted band size: 55; 57; 58 kD; Observed band size: 59 kD)

STORAGE

Store at 4°C short term. For long term storage, store at -20°C, avoiding freeze/thaw cycles.

NOTE

For Research Use Only. Not for diagnostic, therapeutics, prophylactic or in vivo use.