

DATASHEET

SCaMC-1 Rabbit Polyclonal Antibody

CAT. NO. APA14071

KEY FEATURES

Target	SCaMC-1	Source / Host	Rabbit
Reactivity	Human, Mouse, Rat	Clonality	Polyclonal
Applications	WB, IF/ICC	Conjugation	Unconjugated
Form / Buffer	Liquid in 0.42% Potassium phosphate, 0.87% Sodium chloride, pH 7.3, 30% glycerol, and 0.01% sodium azide.		Storage at -20°C

BACKGROUND

Electroneutral antiporter that mediates the transport of adenyly nucleotides through the inner mitochondrial membrane. Originally identified as an ATP-magnesium/inorganic phosphate antiporter, it also acts as a broad specificity adenyly nucleotide antiporter. By regulating the mitochondrial matrix adenyly nucleotide pool, could adapt to changing cellular energetic demands and indirectly regulate adenyly nucleotide-dependent metabolic pathways . In vitro, a low activity is also observed with guanyly and pyrimidine nucleotides . May play a role in protecting cells against oxidative stress-induced cell death, by buffering calcium levels in the mitochondrial matrix through the formation of calcium-phosphate precipitates .

APPLICATION

To ensure optimal assay performance, AREX recommends conducting reagent titration tailored to each testing system for optimal detection results.

WB	1:500 - 1:2000
IF/ICC	1:50 - 1:200

*Results are sample-specific. Please refer to your local assay conditions and test parameters for reference.

PRODUCT OVERVIEW

Description	Rabbit polyclonal antibody to SCaMC-1
Specificity	Recognizes endogenous levels of SCaMC-1 protein.
Antibody Type	Primary antibody
Immunogen	Recombinant fusion protein of human SCaMC-1
Purification	The antibody was purified by immunogen affinity chromatography.
Molecular Weight	Predicted: 51; Observed: 53 kD
Form/Buffer	Liquid in 0.42% Potassium phosphate, 0.87% Sodium chloride, pH 7.3, 30% glycerol, and 0.01% sodium azide.
Alternative Names	APC1; MCSC1; SCAMC1; Calcium-binding mitochondrial carrier protein SCaMC-1; Mitochondrial ATP-Mg/Pi carrier protein 1; Mitochondrial Ca(2+)-dependent solute carrier protein 1; Small calcium-binding mitochondrial carrier protein 1; Solute carrier family 25 member 24
Gene Symbol	SLC25A24
Entrez Gene	29957(Human); 229731(Mouse)
SwissProt	Q6NUK1(Human); Q8BMD8(Mouse)

*AREX continuously optimizes our products. Webpage content may not reflect the latest updates. For inquiries, please contact info@arex.bio or your local distributor.

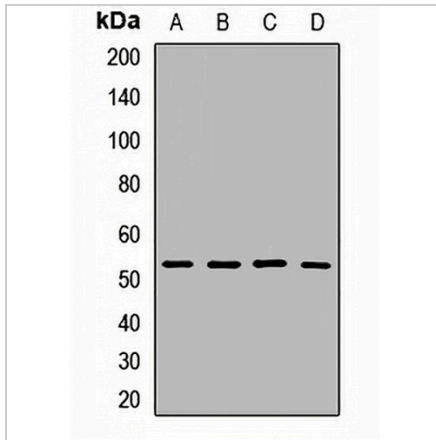
*Clone Number, Reactivity, Source/Host and Clonality can be found in the product name and Key Features section above.

DATASHEET

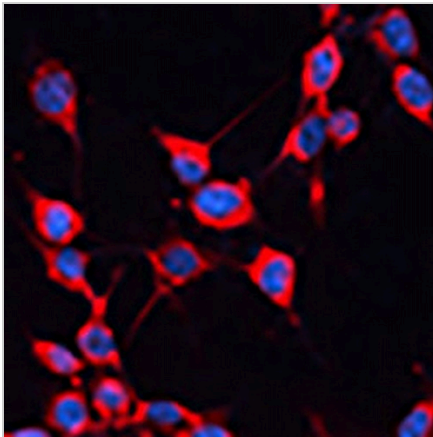
SCaMC-1 Rabbit Polyclonal Antibody

CAT. NO. APA14071

DATA



Western blot analysis of SCaMC-1 expression in HT29 (A), NIH3T3 (B), mouse heart (C), rat spleen (D) whole cell lysates. (Predicted band size: 51; 53 kD; Observed band size: 53 kD)



Immunofluorescent analysis of SCaMC-1 staining in NIH3T3 cells. Formalin-fixed cells were permeabilized with 0.1% Triton X-100 in TBS for 5-10 minutes and blocked with 3% BSA-PBS for 30 minutes at room temperature. Cells were probed with the primary antibody in 3% BSA-PBS and incubated overnight at 4 °C in a humidified chamber. Cells were washed with PBST and incubated with a AREX® Fluor 594-conjugated secondary antibody (red) in PBS at room temperature in the dark. DAPI was used to stain the cell nuclei (blue).

STORAGE

Store at 4°C short term. For long term storage, store at -20°C, avoiding freeze/thaw cycles.

NOTE

For Research Use Only. Not for diagnostic, therapeutics, prophylactic or in vivo use.