

**DATASHEET**

**TCP1 eta Rabbit Polyclonal Antibody**

CAT. NO. APA14073

**KEY FEATURES**

Target	TCP1 eta	Source / Host	Rabbit
Reactivity	Human, Mouse, Rat	Clonality	Polyclonal
Applications	WB	Conjugation	Unconjugated
Form / Buffer	Liquid in 0.42% Potassium phosphate, 0.87% Sodium chloride, pH 7.3, 30% glycerol, and 0.01% sodium azide.		Storage at-20°C

**BACKGROUND**

Component of the chaperonin-containing T-complex (TRiC), a molecular chaperone complex that assists the folding of actin, tubulin and other proteins upon ATP hydrolysis, a molecular chaperone complex that assists the folding of actin, tubulin and other proteins upon ATP hydrolysis. The TRiC complex mediates the folding of WRAP53/TCAB1, thereby regulating telomere maintenance.

**APPLICATION**

To ensure optimal assay performance, AREX recommends conducting reagent titration tailored to each testing system for optimal detection results.

WB	1:500 - 1:2000
----	----------------

\*Results are sample-specific. Please refer to your local assay conditions and test parameters for reference.

**PRODUCT OVERVIEW**

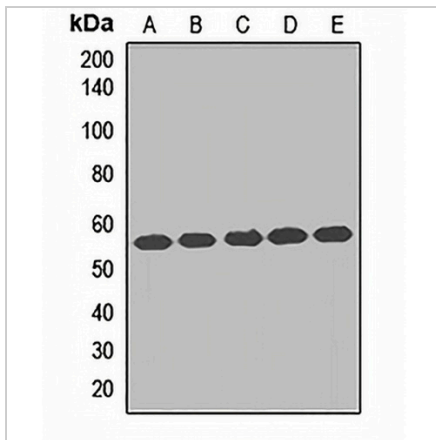
Description	Rabbit polyclonal antibody to TCP1 eta
Specificity	Recognizes endogenous levels of TCP1 eta protein.
Antibody Type	Primary antibody
Immunogen	Recombinant fusion protein of human TCP1 eta
Purification	The antibody was purified by immunogen affinity chromatography.
Molecular Weight	Predicted: 37; Observed: 55 kD
Form/Buffer	Liquid in 0.42% Potassium phosphate, 0.87% Sodium chloride, pH 7.3, 30% glycerol, and 0.01% sodium azide.
Alternative Names	CCTH; NIP7-1; T-complex protein 1 subunit eta; TCP-1-eta; CCT-eta; HIV-1 Nef-interacting protein
Gene Symbol	CCT7
Entrez Gene	10574(Human); 12468(Mouse)
SwissProt	Q99832(Human); P80313(Mouse)

\*AREX continuously optimizes our products. Webpage content may not reflect the latest updates. For inquiries, please contact [info@arexbio.com](mailto:info@arexbio.com) or your local distributor.

\*Clone Number, Reactivity, Source/Host and Clonality can be found in the product name and Key Features section above.

**DATASHEET****TCP1 eta Rabbit Polyclonal Antibody**

CAT. NO. APA14073

**DATA**

Western blot analysis of TCP1 eta expression in A431 (A), HeLa (B), NIH3T3 (C), mouse testis (D), rat testis (E) whole cell lysates. (Predicted band size: 37; 50; 54; 59 kD; Observed band size: 55 kD)

**STORAGE**

Store at 4°C short term. For long term storage, store at -20°C, avoiding freeze/thaw cycles.

**NOTE**

For Research Use Only. Not for diagnostic, therapeutics, prophylactic or in vivo use.