

DATASHEET

CDT2 Rabbit Polyclonal Antibody

CAT. NO. APA14074

KEY FEATURES

Target	CDT2	Source / Host	Rabbit
Reactivity	Human, Mouse, Rat	Clonality	Polyclonal
Applications	WB	Conjugation	Unconjugated
Form / Buffer	Liquid in 0.42% Potassium phosphate, 0.87% Sodium chloride, pH 7.3, 30% glycerol, and 0.01% sodium azide.		Storage at -20°C

BACKGROUND

Substrate-specific adapter of a DCX (DDB1-CUL4-X-box) E3 ubiquitin-protein ligase complex required for cell cycle control, DNA damage response and translesion DNA synthesis. The DCX(DTL) complex, also named CRL4(CDT2) complex, mediates the polyubiquitination and subsequent degradation of CDT1, CDKN1A/p21(CIP1), FBH1, KMT5A and SDE2 E3 ubiquitin-protein ligase complex required for cell cycle control, DNA damage response and translesion DNA synthesis. The DCX(DTL) complex, also named CRL4(CDT2) complex, mediates the polyubiquitination and subsequent degradation of CDT1, CDKN1A/p21(CIP1), FBH1, KMT5A and SDE2 . CDT1 degradation in response to DNA damage is necessary to ensure proper cell cycle regulation of DNA replication .

APPLICATION

To ensure optimal assay performance, AREX recommends conducting reagent titration tailored to each testing system for optimal detection results.

WB	1:500 - 1:2000
----	----------------

*Results are sample-specific. Please refer to your local assay conditions and test parameters for reference.

PRODUCT OVERVIEW

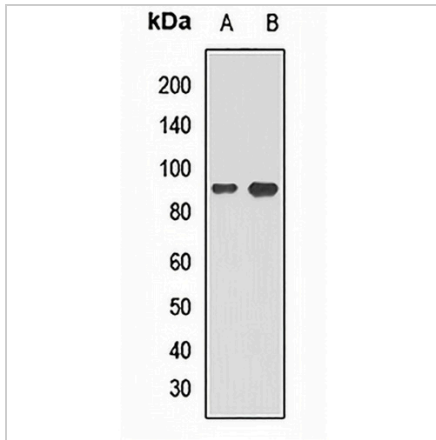
Description	Rabbit polyclonal antibody to CDT2
Specificity	Recognizes endogenous levels of CDT2 protein.
Antibody Type	Primary antibody
Immunogen	Recombinant fusion protein of human CDT2
Purification	The antibody was purified by immunogen affinity chromatography.
Molecular Weight	Predicted: 23; Observed: 90 kD
Form/Buffer	Liquid in 0.42% Potassium phosphate, 0.87% Sodium chloride, pH 7.3, 30% glycerol, and 0.01% sodium azide.
Alternative Names	CDT2; CDW1; DCAF2; L2DTL; RAMP; Denticleless protein homolog; DDB1- and CUL4-associated factor 2; Lethal(2) denticleless protein homolog; Retinoic acid-regulated nuclear matrix-associated protein
Gene Symbol	DTL
Entrez Gene	51514(Human); 76843(Mouse)
SwissProt	Q9NZJ0(Human); Q3TLR7(Mouse)

*AREX continuously optimizes our products. Webpage content may not reflect the latest updates. For inquiries, please contact info@arexbio.com or your local distributor.

*Clone Number, Reactivity, Source/Host and Clonality can be found in the product name and Key Features section above.

DATASHEET**CDT2 Rabbit Polyclonal Antibody**

CAT. NO. APA14074

DATA

Western blot analysis of CDT2 expression in mouse liver (A), rat brain (B) whole cell lysates. (Predicted band size: 23; 79 kD; Observed band size: 90 kD)

STORAGE

Store at 4°C short term. For long term storage, store at -20°C, avoiding freeze/thaw cycles.

NOTE

For Research Use Only. Not for diagnostic, therapeutics, prophylactic or in vivo use.