

DATASHEET

Sm F Rabbit Polyclonal Antibody

CAT. NO. APA14077

KEY FEATURES

Target	Sm F	Source / Host	Rabbit
Reactivity	Human, Mouse	Clonality	Polyclonal
Applications	WB, IHC	Conjugation	Unconjugated
Form / Buffer	Liquid in 0.42% Potassium phosphate, 0.87% Sodium chloride, pH 7.3, 30% glycerol, and 0.01% sodium azide.		Storage at-20°C

BACKGROUND

Plays a role in pre-mRNA splicing as a core component of the spliceosomal U1, U2, U4 and U5 small nuclear ribonucleoproteins (snRNPs), the building blocks of the spliceosome, the building blocks of the spliceosome. Component of both the pre-catalytic spliceosome B complex and activated spliceosome C complexes. As a component of the minor spliceosome, involved in the splicing of U12-type introns in pre-mRNAs. As part of the U7 snRNP it is involved in histone 3'-end processing.

APPLICATION

To ensure optimal assay performance, AREX recommends conducting reagent titration tailored to each testing system for optimal detection results.

WB	1:500 - 1:2000
IHC	1:50 - 1:200

*Results are sample-specific. Please refer to your local assay conditions and test parameters for reference.

PRODUCT OVERVIEW

Description	Rabbit polyclonal antibody to Sm F
Specificity	Recognizes endogenous levels of Sm F protein.
Antibody Type	Primary antibody
Immunogen	Recombinant fusion protein of human Sm F
Purification	The antibody was purified by immunogen affinity chromatography.
Molecular Weight	Predicted: 9 kD; Observed: 12 kD
Form/Buffer	Liquid in 0.42% Potassium phosphate, 0.87% Sodium chloride, pH 7.3, 30% glycerol, and 0.01% sodium azide.
Alternative Names	PBSCF; Small nuclear ribonucleoprotein F; snRNP-F; Sm protein F; Sm-F; SmF
Gene Symbol	SNRPF
Entrez Gene	6636(Human); 69878(Mouse)
SwissProt	P62306(Human); P62307(Mouse)

*AREX continuously optimizes our products. Webpage content may not reflect the latest updates. For inquiries, please contact info@arexbio.com or your local distributor.

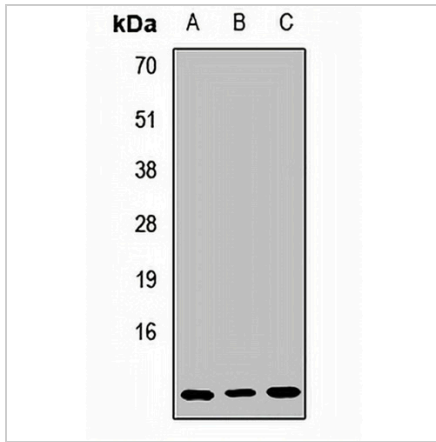
*Clone Number, Reactivity, Source/Host and Clonality can be found in the product name and Key Features section above.

DATASHEET

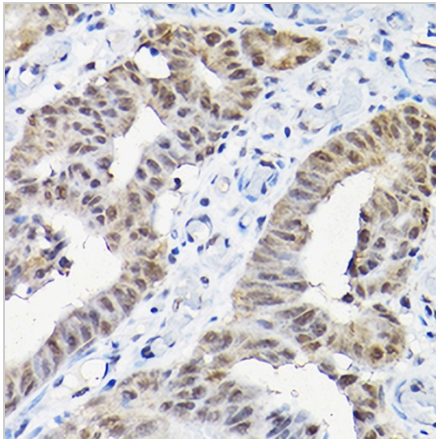
Sm F Rabbit Polyclonal Antibody

CAT. NO. APA14077

DATA



Western blot analysis of Sm F expression in HeLa (A), HT29 (B), mouse brain (C) whole cell lysates. (Predicted band size: 9 kD; Observed band size: 12 kD)



Immunohistochemical analysis of Sm F staining in human colon cancer formalin fixed paraffin embedded tissue section. The section was pre-treated using heat mediated antigen retrieval with sodium citrate buffer (pH 6.0). The section was then incubated with the antibody at room temperature and detected using an HRP conjugated compact polymer system. DAB was used as the chromogen. The section was then counterstained with haematoxylin and mounted with DPX.

STORAGE

Store at 4°C short term. For long term storage, store at -20°C, avoiding freeze/thaw cycles.

NOTE

For Research Use Only. Not for diagnostic, therapeutics, prophylactic or in vivo use.