

**DATASHEET**

**WDR1 Rabbit Polyclonal Antibody**

CAT. NO. APA14078

**KEY FEATURES**

Target	WDR1	Source / Host	Rabbit
Reactivity	Human, Mouse, Rat	Clonality	Polyclonal
Applications	WB	Conjugation	Unconjugated
Form / Buffer	Liquid in 0.42% Potassium phosphate, 0.87% Sodium chloride, pH 7.3, 30% glycerol, and 0.01% sodium azide.		Storage at-20°C

**BACKGROUND**

Induces disassembly of actin filaments in conjunction with ADF/cofilin family proteins . Enhances cofilin-mediated actin severing . Involved in cytokinesis. Involved in chemotactic cell migration by restricting lamellipodial membrane protrusions . Involved in myocardium sarcomere organization. Required for cardiomyocyte growth and maintenance . Involved in megakaryocyte maturation and platelet shedding. Required for the establishment of planar cell polarity (PCP) during follicular epithelium development and for cell shape changes during PCP; the function seems to implicate cooperation with CFL1 and/or DSTN/ADF. Involved in the generation/maintenance of cortical tension .

**APPLICATION**

To ensure optimal assay performance, AREX recommends conducting reagent titration tailored to each testing system for optimal detection results.

WB	1:500 - 1:2000
----	----------------

\*Results are sample-specific. Please refer to your local assay conditions and test parameters for reference.

**PRODUCT OVERVIEW**

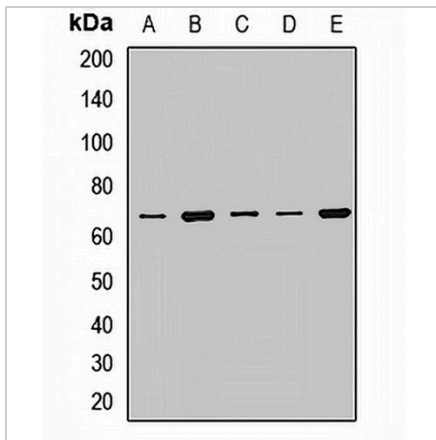
Description	Rabbit polyclonal antibody to WDR1
Specificity	Recognizes endogenous levels of WDR1 protein.
Antibody Type	Primary antibody
Immunogen	Recombinant fusion protein of human WDR1
Purification	The antibody was purified by immunogen affinity chromatography.
Molecular Weight	Predicted: 50; Observed: 68 kD
Form/Buffer	Liquid in 0.42% Potassium phosphate, 0.87% Sodium chloride, pH 7.3, 30% glycerol, and 0.01% sodium azide.
Alternative Names	WD repeat-containing protein 1; Actin-interacting protein 1; AIP1; NORI-1
Gene Symbol	WDR1
Entrez Gene	9948(Human); 22388(Mouse); 360950(Rat)
SwissProt	O75083(Human); O88342(Mouse); Q5RKI0(Rat)

\*AREX continuously optimizes our products. Webpage content may not reflect the latest updates. For inquiries, please contact [info@arexbio.com](mailto:info@arexbio.com) or your local distributor.

\*Clone Number, Reactivity, Source/Host and Clonality can be found in the product name and Key Features section above.

**DATASHEET****WDR1 Rabbit Polyclonal Antibody**

CAT. NO. APA14078

**DATA**

Western blot analysis of WDR1 expression in HT29 (A), MCF7 (B), NIH3T3 (C), mouse brain (D), rat heart (E) whole cell lysates. (Predicted band size: 50; 66 kD; Observed band size: 68 kD)

**STORAGE**

Store at 4°C short term. For long term storage, store at -20°C, avoiding freeze/thaw cycles.

**NOTE**

For Research Use Only. Not for diagnostic, therapeutics, prophylactic or in vivo use.