

**DATASHEET**

**GPN1 Rabbit Polyclonal Antibody**

CAT. NO. APA14079

**KEY FEATURES**

Target	GPN1	Source / Host	Rabbit
Reactivity	Human, Mouse, Rat	Clonality	Polyclonal
Applications	WB	Conjugation	Unconjugated
Form / Buffer	Liquid in 0.42% Potassium phosphate, 0.87% Sodium chloride, pH 7.3, 30% glycerol, and 0.01% sodium azide.		Storage at -20°C

**BACKGROUND**

Small GTPase involved in the correct assembly of RNA polymerase II (RNAPII) complex, ensuring proper nuclear import of RNAPII complex, ensuring proper nuclear import of RNAPII. In vitro, exhibits a chaperone-like activity and a chaperone substrate protein can stimulate its GTPase activity. It is proposed to bind exposed hydrophobic peptide regions of newly synthesized RNAP II subunit, triggering the opening of a hydrophobic pocket in its GDP-bound state. This interaction likely traps exposed hydrophobic regions, preventing misassembly and providing a time window for association with the cognate RNAP II subunit. Peptide binding promotes GDP release, and increasing GTP affinity to facilitate GTP rebinding.

**APPLICATION**

To ensure optimal assay performance, AREX recommends conducting reagent titration tailored to each testing system for optimal detection results.

WB	1:500 - 1:2000
----	----------------

\*Results are sample-specific. Please refer to your local assay conditions and test parameters for reference.

**PRODUCT OVERVIEW**

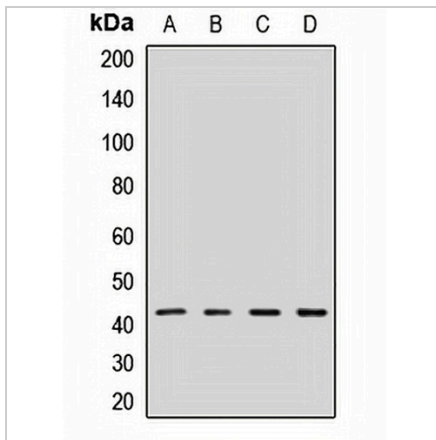
Description	Rabbit polyclonal antibody to GPN1
Specificity	Recognizes endogenous levels of GPN1 protein.
Antibody Type	Primary antibody
Immunogen	Recombinant fusion protein of human GPN1
Purification	The antibody was purified by immunogen affinity chromatography.
Molecular Weight	Predicted: 31; Observed: 42 kD
Form/Buffer	Liquid in 0.42% Potassium phosphate, 0.87% Sodium chloride, pH 7.3, 30% glycerol, and 0.01% sodium azide.
Alternative Names	MBDIN; XAB1; GPN-loop GTPase 1; MBD2-interacting protein; MBDin; XPA-binding protein 1
Gene Symbol	GPN1
Entrez Gene	11321(Human); 74254(Mouse)
SwissProt	Q9HCN4(Human); Q8VCE2(Mouse)

\*AREX continuously optimizes our products. Webpage content may not reflect the latest updates. For inquiries, please contact [info@arexbio.com](mailto:info@arexbio.com) or your local distributor.

\*Clone Number, Reactivity, Source/Host and Clonality can be found in the product name and Key Features section above.

**DATASHEET****GPN1 Rabbit Polyclonal Antibody**

CAT. NO. APA14079

**DATA**

Western blot analysis of GPN1 expression in Hela (A), mouse brain (B), mouse liver (C), rat brain (D) whole cell lysates. (Predicted band size: 31; 33; 40; 41; 43 kD; Observed band size: 42 kD)

**STORAGE**

Store at 4°C short term. For long term storage, store at -20°C, avoiding freeze/thaw cycles.

**NOTE**

For Research Use Only. Not for diagnostic, therapeutics, prophylactic or in vivo use.