

DATASHEET

Cyclophilin H Rabbit Polyclonal Antibody

CAT. NO. APA14081

KEY FEATURES

Target	Cyclophilin H	Source / Host	Rabbit
Reactivity	Human, Mouse, Rat	Clonality	Polyclonal
Applications	WB	Conjugation	Unconjugated
Form / Buffer	Liquid in 0.42% Potassium phosphate, 0.87% Sodium chloride, pH 7.3, 30% glycerol, and 0.01% sodium azide.		Storage at -20°C

BACKGROUND

PPIase that catalyzes the cis-trans isomerization of proline imidic peptide bonds in oligopeptides and may therefore assist protein folding . Participates in pre-mRNA splicing. May play a role in the assembly of the U4/U5/U6 tri-snRNP complex, one of the building blocks of the spliceosome. May act as a chaperone.

APPLICATION

To ensure optimal assay performance, AREX recommends conducting reagent titration tailored to each testing system for optimal detection results.

WB	1:500 - 1:2000
----	----------------

*Results are sample-specific. Please refer to your local assay conditions and test parameters for reference.

PRODUCT OVERVIEW

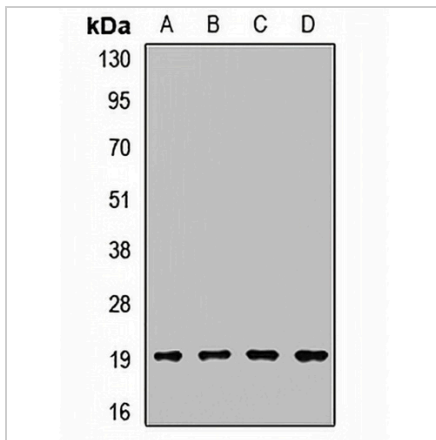
Description	Rabbit polyclonal antibody to Cyclophilin H
Specificity	Recognizes endogenous levels of Cyclophilin H protein.
Antibody Type	Primary antibody
Immunogen	Recombinant fusion protein of human Cyclophilin H
Purification	The antibody was purified by immunogen affinity chromatography.
Molecular Weight	Predicted: 14; Observed: 19 kD
Form/Buffer	Liquid in 0.42% Potassium phosphate, 0.87% Sodium chloride, pH 7.3, 30% glycerol, and 0.01% sodium azide.
Alternative Names	CYP20; CYPH; Peptidyl-prolyl cis-trans isomerase H; PPIase H; Rotamase H; Small nuclear ribonucleoprotein particle-specific cyclophilin H; CypH; U-snRNP-associated cyclophilin SnuCyp-20; USA-CYP
Gene Symbol	PPIH
Entrez Gene	10465(Human); 66101(Mouse)
SwissProt	O43447(Human); Q9D868(Mouse)

*AREX continuously optimizes our products. Webpage content may not reflect the latest updates. For inquiries, please contact info@arexbio.com or your local distributor.

*Clone Number, Reactivity, Source/Host and Clonality can be found in the product name and Key Features section above.

DATASHEET**Cyclophilin H Rabbit Polyclonal Antibody**

CAT. NO. APA14081

DATA

Western blot analysis of Cyclophilin H expression in A549 (A), HeLa (B), mouse testis (C), rat testis (D) whole cell lysates. (Predicted band size: 14; 19 kD; Observed band size: 19 kD)

STORAGE

Store at 4°C short term. For long term storage, store at -20°C, avoiding freeze/thaw cycles.

NOTE

For Research Use Only. Not for diagnostic, therapeutics, prophylactic or in vivo use.