

DATASHEET

PDE8A Rabbit Polyclonal Antibody

CAT. NO. APA14087

KEY FEATURES

Target	PDE8A	Source / Host	Rabbit
Reactivity	Mouse, Rat	Clonality	Polyclonal
Applications	WB	Conjugation	Unconjugated
Form / Buffer	Liquid in 0.42% Potassium phosphate, 0.87% Sodium chloride, pH 7.3, 30% glycerol, and 0.01% sodium azide.		Storage at -20°C

BACKGROUND

Hydrolyzes the second messenger cAMP, which is a key regulator of many important physiological processes . May be involved in maintaining basal levels of the cyclic nucleotide and/or in the cAMP regulation of germ cell development . Binding to RAF1 reduces RAF1 'Ser-259' inhibitory-phosphorylation and stimulates RAF1-dependent EGF-activated ERK-signaling . Protects against cell death induced by hydrogen peroxide and staurosporine .

APPLICATION

To ensure optimal assay performance, AREX recommends conducting reagent titration tailored to each testing system for optimal detection results.

WB	1:500 - 1:2000
----	----------------

*Results are sample-specific. Please refer to your local assay conditions and test parameters for reference.

PRODUCT OVERVIEW

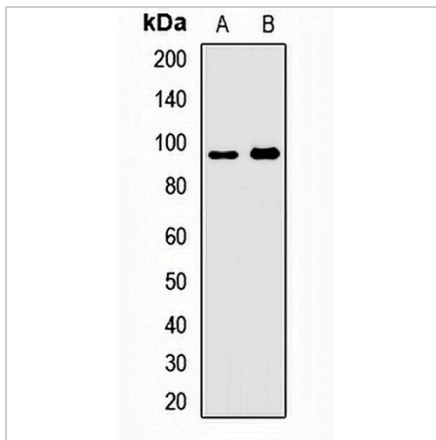
Description	Rabbit polyclonal antibody to PDE8A
Specificity	Recognizes endogenous levels of PDE8A protein.
Antibody Type	Primary antibody
Immunogen	Recombinant fusion protein of human PDE8A
Purification	The antibody was purified by immunogen affinity chromatography.
Molecular Weight	Predicted: 25; Observed: 93 kD
Form/Buffer	Liquid in 0.42% Potassium phosphate, 0.87% Sodium chloride, pH 7.3, 30% glycerol, and 0.01% sodium azide.
Alternative Names	High affinity cAMP-specific and IBMX-insensitive 3',5'-cyclic phosphodiesterase 8A
Gene Symbol	PDE8A
Entrez Gene	5151(Human); 18584(Mouse)
SwissProt	O60658(Human); O88502(Mouse)

*AREX continuously optimizes our products. Webpage content may not reflect the latest updates. For inquiries, please contact info@arexbio.com or your local distributor.

*Clone Number, Reactivity, Source/Host and Clonality can be found in the product name and Key Features section above.

DATASHEET**PDE8A Rabbit Polyclonal Antibody**

CAT. NO. APA14087

DATA

Western blot analysis of PDE8A expression in mouse liver (A), rat testis (B) whole cell lysates. (Predicted band size: 25; 29; 86; 88; 93 kD; Observed band size: 93 kD)

STORAGE

Store at 4°C short term. For long term storage, store at -20°C, avoiding freeze/thaw cycles.

NOTE

For Research Use Only. Not for diagnostic, therapeutics, prophylactic or in vivo use.