

DATASHEET

WSB1 Rabbit Polyclonal Antibody

CAT. NO. APA14089

KEY FEATURES

Target	WSB1	Source / Host	Rabbit
Reactivity	Human, Mouse	Clonality	Polyclonal
Applications	WB	Conjugation	Unconjugated
Form / Buffer	Liquid in 0.42% Potassium phosphate, 0.87% Sodium chloride, pH 7.3, 30% glycerol, and 0.01% sodium azide.		Storage at -20°C

BACKGROUND

Probable substrate-recognition component of a SCF-like ECS (Elongin-Cullin-SOCS-box protein) E3 ubiquitin ligase complex which mediates the ubiquitination and subsequent proteasomal degradation of target proteins. Recognizes type II iodothyronine deiodinase/DIO2. Confers constitutive instability to HIPK2 through proteasomal degradation.

APPLICATION

To ensure optimal assay performance, AREX recommends conducting reagent titration tailored to each testing system for optimal detection results.

WB	1:500 - 1:2000
----	----------------

*Results are sample-specific. Please refer to your local assay conditions and test parameters for reference.

PRODUCT OVERVIEW

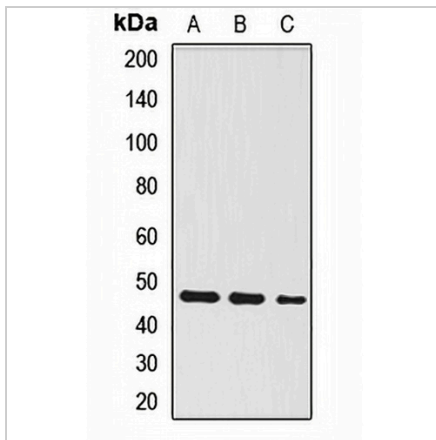
Description	Rabbit polyclonal antibody to WSB1
Specificity	Recognizes endogenous levels of WSB1 protein.
Antibody Type	Primary antibody
Immunogen	Recombinant fusion protein of human WSB1
Purification	The antibody was purified by immunogen affinity chromatography.
Molecular Weight	Predicted: 24; Observed: 47 kD
Form/Buffer	Liquid in 0.42% Potassium phosphate, 0.87% Sodium chloride, pH 7.3, 30% glycerol, and 0.01% sodium azide.
Alternative Names	SWIP1; WD repeat and SOCS box-containing protein 1; WSB-1; SOCS box-containing WD protein SWIP-1
Gene Symbol	WSB1
Entrez Gene	26118(Human); 78889(Mouse)
SwissProt	Q9Y6I7(Human); O54927(Mouse)

*AREX continuously optimizes our products. Webpage content may not reflect the latest updates. For inquiries, please contact info@arexbio.com or your local distributor.

*Clone Number, Reactivity, Source/Host and Clonality can be found in the product name and Key Features section above.

DATASHEET**WSB1 Rabbit Polyclonal Antibody**

CAT. NO. APA14089

DATA

Western blot analysis of WSB1 expression in A549 (A), HeLa (B), HepG2 (C) whole cell lysates. (Predicted band size: 24; 27; 30; 47 kD; Observed band size: 47 kD)

STORAGE

Store at 4°C short term. For long term storage, store at -20°C, avoiding freeze/thaw cycles.

NOTE

For Research Use Only. Not for diagnostic, therapeutics, prophylactic or in vivo use.