

DATASHEET

CNPY2 Rabbit Polyclonal Antibody

CAT. NO. APA14091

KEY FEATURES

Target	CNPY2	Source / Host	Rabbit
Reactivity	Human, Mouse, Rat	Clonality	Polyclonal
Applications	WB	Conjugation	Unconjugated
Form / Buffer	Liquid in 0.42% Potassium phosphate, 0.87% Sodium chloride, pH 7.3, 30% glycerol, and 0.01% sodium azide.		Storage at -20°C

BACKGROUND

Positive regulator of neurite outgrowth by stabilizing myosin regulatory light chain (MRLC). It prevents MIR-mediated MRLC ubiquitination and its subsequent proteasomal degradation.

APPLICATION

To ensure optimal assay performance, AREX recommends conducting reagent titration tailored to each testing system for optimal detection results.

WB	1:500 - 1:2000
----	----------------

*Results are sample-specific. Please refer to your local assay conditions and test parameters for reference.

PRODUCT OVERVIEW

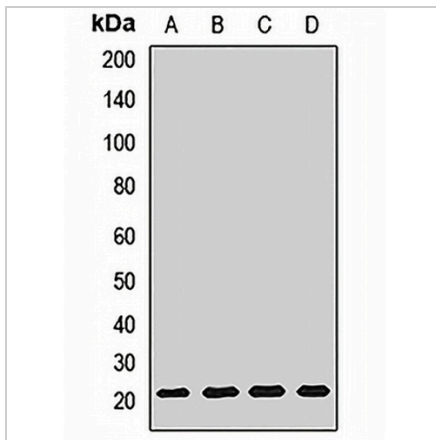
Description	Rabbit polyclonal antibody to CNPY2
Specificity	Recognizes endogenous levels of CNPY2 protein.
Antibody Type	Primary antibody
Immunogen	Recombinant fusion protein of human CNPY2
Purification	The antibody was purified by immunogen affinity chromatography.
Molecular Weight	Predicted: 9; Observed: 21 kD
Form/Buffer	Liquid in 0.42% Potassium phosphate, 0.87% Sodium chloride, pH 7.3, 30% glycerol, and 0.01% sodium azide.
Alternative Names	MSAP; TMEM4; ZSIG9; Protein canopy homolog 2; MIR-interacting saposin-like protein; Putative secreted protein Zsig9; Transmembrane protein 4
Gene Symbol	CNPY2
Entrez Gene	10330(Human); 56530(Mouse)
SwissProt	Q9Y2B0(Human); Q9QXT0(Mouse)

*AREX continuously optimizes our products. Webpage content may not reflect the latest updates. For inquiries, please contact info@arexbio.com or your local distributor.

*Clone Number, Reactivity, Source/Host and Clonality can be found in the product name and Key Features section above.

DATASHEET**CNPY2 Rabbit Polyclonal Antibody**

CAT. NO. APA14091

DATA

Western blot analysis of CNPY2 expression in A431 (A), HeLa (B), mouse liver (C), rat liver (D) whole cell lysates. (Predicted band size: 9; 20 kD; Observed band size: 21 kD)

STORAGE

Store at 4°C short term. For long term storage, store at -20°C, avoiding freeze/thaw cycles.

NOTE

For Research Use Only. Not for diagnostic, therapeutics, prophylactic or in vivo use.