

**DATASHEET**

**Nap1 Rabbit Polyclonal Antibody**

CAT. NO. APA14098

**KEY FEATURES**

Target	Nap1	Source / Host	Rabbit
Reactivity	Human, Mouse, Rat	Clonality	Polyclonal
Applications	WB, IF/ICC	Conjugation	Unconjugated
Form / Buffer	Liquid in 0.42% Potassium phosphate, 0.87% Sodium chloride, pH 7.3, 30% glycerol, and 0.01% sodium azide.		Storage at -20°C

**BACKGROUND**

Part of the WAVE complex that regulates lamellipodia formation. The WAVE complex regulates actin filament reorganization via its interaction with the Arp2/3 complex. Actin remodeling activity is regulated by RAC1. As component of the WAVE1 complex, required for BDNF-NTRK2 endocytic trafficking and signaling from early endosomes.

**APPLICATION**

To ensure optimal assay performance, AREX recommends conducting reagent titration tailored to each testing system for optimal detection results.

WB	1:500 - 1:2000
IF/ICC	1:50 - 1:200

\*Results are sample-specific. Please refer to your local assay conditions and test parameters for reference.

**PRODUCT OVERVIEW**

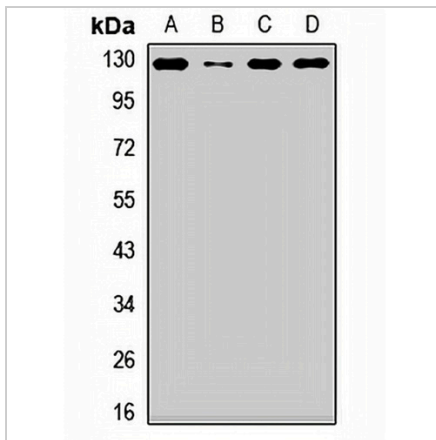
Description	Rabbit polyclonal antibody to Nap1
Specificity	Recognizes endogenous levels of Nap1 protein.
Antibody Type	Primary antibody
Immunogen	Recombinant fusion protein of human Nap1
Purification	The antibody was purified by immunogen affinity chromatography.
Molecular Weight	Predicted: 128; Observed: 125 kD
Form/Buffer	Liquid in 0.42% Potassium phosphate, 0.87% Sodium chloride, pH 7.3, 30% glycerol, and 0.01% sodium azide.
Alternative Names	HEM2; KIAA0587; NAP1; Nck-associated protein 1; NAP 1; Membrane-associated protein HEM-2; p125Nap1
Gene Symbol	NCKAP1
Entrez Gene	10787(Human); 50884(Mouse); 58823(Rat)
SwissProt	Q9Y2A7(Human); P28660(Mouse); P55161(Rat)

\*AREX continuously optimizes our products. Webpage content may not reflect the latest updates. For inquiries, please contact [info@arexbio.com](mailto:info@arexbio.com) or your local distributor.

\*Clone Number, Reactivity, Source/Host and Clonality can be found in the product name and Key Features section above.

**DATASHEET****Nap1 Rabbit Polyclonal Antibody**

CAT. NO. APA14098

**DATA**

Western blot analysis of Nap1 expression in HeLa (A), HepG2 (B), mouse heart (C), rat brain (D) whole cell lysates. (Predicted band size: 128; 129 kD; Observed band size: 125 kD)

**STORAGE**

Store at 4°C short term. For long term storage, store at -20°C, avoiding freeze/thaw cycles.

**NOTE**

For Research Use Only. Not for diagnostic, therapeutics, prophylactic or in vivo use.