

**DATASHEET**

**Importin 9 Rabbit Polyclonal Antibody**

CAT. NO. APA14099

**KEY FEATURES**

Target	Importin 9	Source / Host	Rabbit
Reactivity	Human, Mouse, Rat	Clonality	Polyclonal
Applications	WB, IF/ICC	Conjugation	Unconjugated
Form / Buffer	Liquid in 0.42% Potassium phosphate, 0.87% Sodium chloride, pH 7.3, 30% glycerol, and 0.01% sodium azide.		Storage at-20°C

**BACKGROUND**

Nuclear transport receptor that mediates nuclear import of proteins, such as histones, proteasome and actin . Serves as receptor for nuclear localization signals (NLS) in cargo substrates . Is thought to mediate docking of the importin/substrate complex to the nuclear pore complex (NPC) through binding to nucleoporin and the complex is subsequently translocated through the pore by an energy requiring, Ran-dependent mechanism . At the nucleoplasmic side of the NPC, Ran binds to the importin, the importin/substrate complex dissociates and importin is re-exported from the nucleus to the cytoplasm where GTP hydrolysis releases Ran .

**APPLICATION**

To ensure optimal assay performance, AREX recommends conducting reagent titration tailored to each testing system for optimal detection results.

WB	1:500 - 1:2000
IF/ICC	1:50 - 1:200

\*Results are sample-specific. Please refer to your local assay conditions and test parameters for reference.

**PRODUCT OVERVIEW**

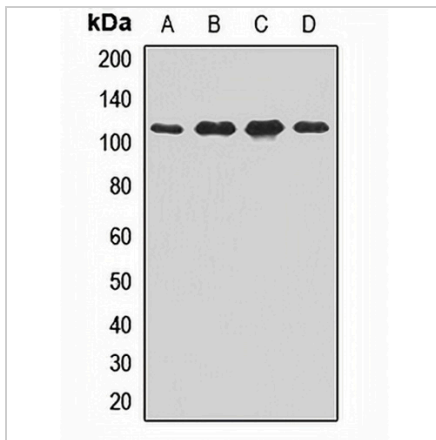
Description	Rabbit polyclonal antibody to Importin 9
Specificity	Recognizes endogenous levels of Importin 9 protein.
Antibody Type	Primary antibody
Immunogen	Recombinant fusion protein of human Importin 9
Purification	The antibody was purified by immunogen affinity chromatography.
Molecular Weight	Predicted: 115 kD; Observed: 116 kD
Form/Buffer	Liquid in 0.42% Potassium phosphate, 0.87% Sodium chloride, pH 7.3, 30% glycerol, and 0.01% sodium azide.
Alternative Names	IMP9; KIAA1192; RANBP9; Importin-9; Imp9; Ran-binding protein 9; RanBP9
Gene Symbol	IPO9
Entrez Gene	55705(Human)
SwissProt	Q96P70(Human); Q91YE6(Mouse)

\*AREX continuously optimizes our products. Webpage content may not reflect the latest updates. For inquiries, please contact [info@arexbio.com](mailto:info@arexbio.com) or your local distributor.

\*Clone Number, Reactivity, Source/Host and Clonality can be found in the product name and Key Features section above.

**DATASHEET****Importin 9 Rabbit Polyclonal Antibody**

CAT. NO. APA14099

**DATA**

Western blot analysis of Importin 9 expression in Hela (A), HEK293T (B), mouse lung (C), rat brain (D) whole cell lysates. (Predicted band size: 115 kD; Observed band size: 116 kD)

**STORAGE**

Store at 4°C short term. For long term storage, store at -20°C, avoiding freeze/thaw cycles.

**NOTE**

For Research Use Only. Not for diagnostic, therapeutics, prophylactic or in vivo use.