

**DATASHEET**

**hES Rabbit Polyclonal Antibody**

CAT. NO. APA14100

**KEY FEATURES**

Target	hES	Source / Host	Rabbit
Reactivity	Human, Mouse	Clonality	Polyclonal
Applications	WB, IF/ICC	Conjugation	Unconjugated
Form / Buffer	Liquid in 0.42% Potassium phosphate, 0.87% Sodium chloride, pH 7.3, 30% glycerol, and 0.01% sodium azide.		Storage at -20°C

**BACKGROUND**

Acts as a ribosome receptor and mediates interaction between the ribosome and the endoplasmic reticulum membrane.

**APPLICATION**

To ensure optimal assay performance, AREX recommends conducting reagent titration tailored to each testing system for optimal detection results.

WB	1:500 - 1:2000
IF/ICC	1:50 - 1:200

\*Results are sample-specific. Please refer to your local assay conditions and test parameters for reference.

**PRODUCT OVERVIEW**

Description	Rabbit polyclonal antibody to hES
Specificity	Recognizes endogenous levels of hES protein.
Antibody Type	Primary antibody
Immunogen	Recombinant fusion protein of human hES
Purification	The antibody was purified by immunogen affinity chromatography.
Molecular Weight	Predicted: 108; Observed: 120 kD
Form/Buffer	Liquid in 0.42% Potassium phosphate, 0.87% Sodium chloride, pH 7.3, 30% glycerol, and 0.01% sodium azide.
Alternative Names	KIAA1398; Ribosome-binding protein 1; 180 kDa ribosome receptor homolog; RRp; ES/130-related protein; Ribosome receptor protein
Gene Symbol	RRBP1
Entrez Gene	6238(Human); 81910(Mouse)
SwissProt	Q9P2E9(Human); Q99PL5(Mouse)

\*AREX continuously optimizes our products. Webpage content may not reflect the latest updates. For inquiries, please contact [info@arexbio.com](mailto:info@arexbio.com) or your local distributor.

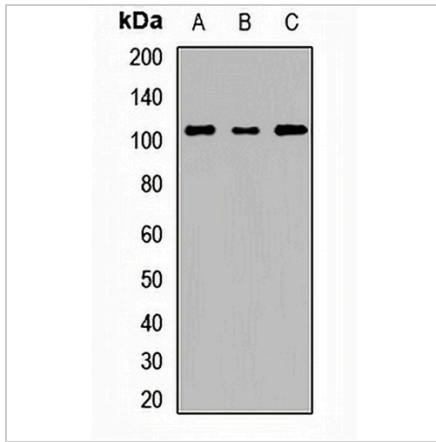
\*Clone Number, Reactivity, Source/Host and Clonality can be found in the product name and Key Features section above.

**DATASHEET**

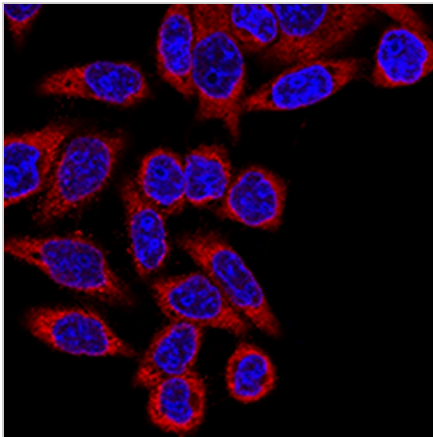
**hES Rabbit Polyclonal Antibody**

CAT. NO. APA14100

**DATA**



Western blot analysis of hES expression in U87 (A), HeLa (B), mouse brain (C) whole cell lysates. (Predicted band size: 108; 152 kD; Observed band size: 120 kD)



Immunofluorescent analysis of hES staining in HeLa cells. Formalin-fixed cells were permeabilized with 0.1% Triton X-100 in TBS for 5-10 minutes and blocked with 3% BSA-PBS for 30 minutes at room temperature. Cells were probed with the primary antibody in 3% BSA-PBS and incubated overnight at 4 °C in a humidified chamber. Cells were washed with PBST and incubated with a AREX® Fluor 594-conjugated secondary antibody (red) in PBS at room temperature in the dark. DAPI was used to stain the cell nuclei (blue).

**STORAGE**

Store at 4°C short term. For long term storage, store at -20°C, avoiding freeze/thaw cycles.

**NOTE**

For Research Use Only. Not for diagnostic, therapeutics, prophylactic or in vivo use.