

DATASHEET

SPA-1 Rabbit Polyclonal Antibody

CAT. NO. APA14104

KEY FEATURES

Target	SPA-1	Source / Host	Rabbit
Reactivity	Human, Mouse	Clonality	Polyclonal
Applications	WB, IHC	Conjugation	Unconjugated
Form / Buffer	Liquid in 0.42% Potassium phosphate, 0.87% Sodium chloride, pH 7.3, 30% glycerol, and 0.01% sodium azide.		Storage at -20°C

BACKGROUND

GTPase activator for the nuclear Ras-related regulatory proteins Rap1 and Rap2 in vitro, converting them to the putatively inactive GDP-bound state . Affects cell cycle progression .

APPLICATION

To ensure optimal assay performance, AREX recommends conducting reagent titration tailored to each testing system for optimal detection results.

WB	1:500 - 1:2000
IHC	1:50 - 1:200

*Results are sample-specific. Please refer to your local assay conditions and test parameters for reference.

PRODUCT OVERVIEW

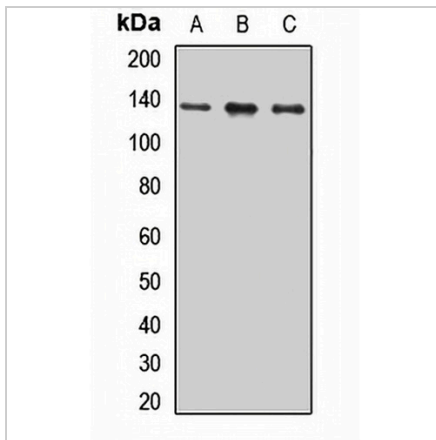
Description	Rabbit polyclonal antibody to SPA-1
Specificity	Recognizes endogenous levels of SPA-1 protein.
Antibody Type	Primary antibody
Immunogen	Recombinant fusion protein of human SPA-1
Purification	The antibody was purified by immunogen affinity chromatography.
Molecular Weight	Predicted: 112 kD; Observed: 130 kD
Form/Buffer	Liquid in 0.42% Potassium phosphate, 0.87% Sodium chloride, pH 7.3, 30% glycerol, and 0.01% sodium azide.
Alternative Names	SPA1; Signal-induced proliferation-associated protein 1; Sipa-1; GTPase-activating protein Spa-1; p130 SPA-1
Gene Symbol	SIPA1
Entrez Gene	6494(Human)
SwissProt	Q96FS4(Human); P46062(Mouse)

*AREX continuously optimizes our products. Webpage content may not reflect the latest updates. For inquiries, please contact info@arexbio.com or your local distributor.

*Clone Number, Reactivity, Source/Host and Clonality can be found in the product name and Key Features section above.

DATASHEET**SPA-1 Rabbit Polyclonal Antibody**

CAT. NO. APA14104

DATA

Western blot analysis of SPA-1 expression in K562 (A), HeLa (B), mouse spleen (C) whole cell lysates. (Predicted band size: 112 kD; Observed band size: 130 kD)

STORAGE

Store at 4°C short term. For long term storage, store at -20°C, avoiding freeze/thaw cycles.

NOTE

For Research Use Only. Not for diagnostic, therapeutics, prophylactic or in vivo use.