

DATASHEET

CIP2A Rabbit Polyclonal Antibody

CAT. NO. APA14105

KEY FEATURES

Target	CIP2A	Source / Host	Rabbit
Reactivity	Human, Mouse, Rat	Clonality	Polyclonal
Applications	WB	Conjugation	Unconjugated
Form / Buffer	Liquid in 0.42% Potassium phosphate, 0.87% Sodium chloride, pH 7.3, 30% glycerol, and 0.01% sodium azide.		Storage at-20°C

BACKGROUND

Acts as an inhibitor of protein phosphatase PP2A . Promotes anchorage-independent cell growth and tumor formation by preventing dephosphorylation of MYC, thereby stabilizing MYC in human malignancies . Together with TOPBP1, plays an essential role in the response to genome instability generated by the presence of acentric chromosome fragments derived from shattered chromosomes within micronuclei .

APPLICATION

To ensure optimal assay performance, AREX recommends conducting reagent titration tailored to each testing system for optimal detection results.

WB	1:500 - 1:1000
----	----------------

*Results are sample-specific. Please refer to your local assay conditions and test parameters for reference.

PRODUCT OVERVIEW

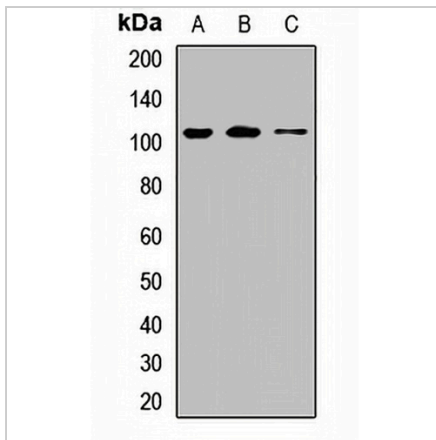
Description	Rabbit polyclonal antibody to CIP2A
Specificity	Recognizes endogenous levels of CIP2A protein.
Antibody Type	Primary antibody
Immunogen	Recombinant fusion protein of human CIP2A
Purification	The antibody was purified by immunogen affinity chromatography.
Molecular Weight	Predicted: 84; Observed: 102 kD
Form/Buffer	Liquid in 0.42% Potassium phosphate, 0.87% Sodium chloride, pH 7.3, 30% glycerol, and 0.01% sodium azide.
Alternative Names	CIP2A; Protein CIP2A; Cancerous inhibitor of PP2A; p90 autoantigen
Gene Symbol	KIAA1524
Entrez Gene	57650(Human); 224171(Mouse)
SwissProt	Q8TCG1(Human); Q8BWY9(Mouse)

*AREX continuously optimizes our products. Webpage content may not reflect the latest updates. For inquiries, please contact info@arexbio.com or your local distributor.

*Clone Number, Reactivity, Source/Host and Clonality can be found in the product name and Key Features section above.

DATASHEET**CIP2A Rabbit Polyclonal Antibody**

CAT. NO. APA14105

DATA

Western blot analysis of CIP2A expression in MCF7 (A), HeLa (B), rat testis (C) whole cell lysates. (Predicted band size: 84; 102 kD; Observed band size: 102 kD)

STORAGE

Store at 4°C short term. For long term storage, store at -20°C, avoiding freeze/thaw cycles.

NOTE

For Research Use Only. Not for diagnostic, therapeutics, prophylactic or in vivo use.