

DATASHEET

AP2-sigma Rabbit Polyclonal Antibody

CAT. NO. APA14107

KEY FEATURES

Target	AP2-sigma	Source / Host	Rabbit
Reactivity	Human, Mouse, Rat	Clonality	Polyclonal
Applications	WB	Conjugation	Unconjugated
Form / Buffer	Liquid in 0.42% Potassium phosphate, 0.87% Sodium chloride, pH 7.3, 30% glycerol, and 0.01% sodium azide.		Storage at -20°C

BACKGROUND

Component of the adaptor protein complex 2 (AP-2). Adaptor protein complexes function in protein transport via transport vesicles in different membrane traffic pathways. Adaptor protein complexes are vesicle coat components and appear to be involved in cargo selection and vesicle formation. AP-2 is involved in clathrin-dependent endocytosis in which cargo proteins are incorporated into vesicles surrounded by clathrin (clathrin-coated vesicles, CCVs) which are destined for fusion with the early endosome. The clathrin lattice serves as a mechanical scaffold but is itself unable to bind directly to membrane components.

APPLICATION

To ensure optimal assay performance, AREX recommends conducting reagent titration tailored to each testing system for optimal detection results.

WB	1:500 - 1:2000
----	----------------

*Results are sample-specific. Please refer to your local assay conditions and test parameters for reference.

PRODUCT OVERVIEW

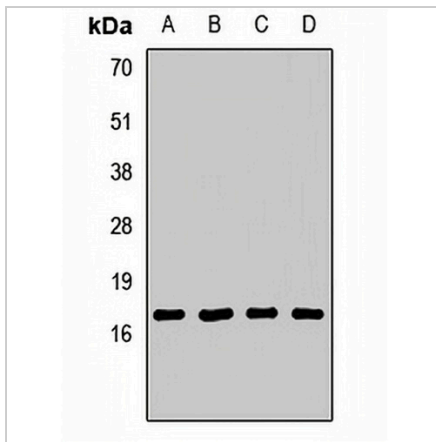
Description	Rabbit polyclonal antibody to AP2-sigma
Specificity	Recognizes endogenous levels of AP2-sigma protein.
Antibody Type	Primary antibody
Immunogen	Recombinant fusion protein of human AP2-sigma
Purification	The antibody was purified by immunogen affinity chromatography.
Molecular Weight	Predicted: 12; Observed: 17 kD
Form/Buffer	Liquid in 0.42% Potassium phosphate, 0.87% Sodium chloride, pH 7.3, 30% glycerol, and 0.01% sodium azide.
Alternative Names	AP17; CLAPS2; AP-2 complex subunit sigma; Adapter-related protein complex 2 subunit sigma; Adaptor protein complex AP-2 subunit sigma; Clathrin assembly protein 2 sigma small chain; Clathrin coat assembly protein AP17; Clathrin coat-associated protein AP17; HA2 17 kDa subunit; Plasma membrane adaptor AP-2 17 kDa protein; Sigma2-adaptin
Gene Symbol	AP2S1
Entrez Gene	1175(Human); 232910(Mouse); 65046(Rat)
SwissProt	P53680(Human); P62743(Mouse); P62744(Rat)

*AREX continuously optimizes our products. Webpage content may not reflect the latest updates. For inquiries, please contact info@arexbio.com or your local distributor.

*Clone Number, Reactivity, Source/Host and Clonality can be found in the product name and Key Features section above.

DATASHEET**AP2-sigma Rabbit Polyclonal Antibody**

CAT. NO. APA14107

DATA

Western blot analysis of AP2-sigma expression in Hela (A), SHSY5Y (B), mouse brain (C), rat brain (D) whole cell lysates. (Predicted band size: 12; 17 kD; Observed band size: 17 kD)

STORAGE

Store at 4°C short term. For long term storage, store at -20°C, avoiding freeze/thaw cycles.

NOTE

For Research Use Only. Not for diagnostic, therapeutics, prophylactic or in vivo use.