

DATASHEET

TRAX Rabbit Polyclonal Antibody

CAT. NO. APA14109

KEY FEATURES

Target	TRAX	Source / Host	Rabbit
Reactivity	Human, Mouse, Rat	Clonality	Polyclonal
Applications	WB	Conjugation	Unconjugated
Form / Buffer	Liquid in 0.42% Potassium phosphate, 0.87% Sodium chloride, pH 7.3, 30% glycerol, and 0.01% sodium azide.		Storage at -20°C

BACKGROUND

Acts in combination with TSN as an endonuclease involved in the activation of the RNA-induced silencing complex (RISC). Possible role in spermatogenesis.

APPLICATION

To ensure optimal assay performance, AREX recommends conducting reagent titration tailored to each testing system for optimal detection results.

WB	1:500 - 1:2000
----	----------------

*Results are sample-specific. Please refer to your local assay conditions and test parameters for reference.

PRODUCT OVERVIEW

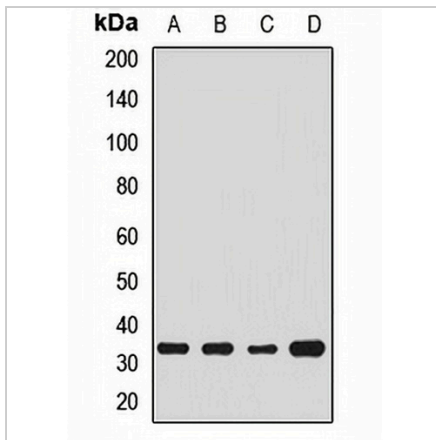
Description	Rabbit polyclonal antibody to TRAX
Specificity	Recognizes endogenous levels of TRAX protein.
Antibody Type	Primary antibody
Immunogen	Recombinant fusion protein of human TRAX
Purification	The antibody was purified by immunogen affinity chromatography.
Molecular Weight	Predicted: 33 kD; Observed: 33 kD
Form/Buffer	Liquid in 0.42% Potassium phosphate, 0.87% Sodium chloride, pH 7.3, 30% glycerol, and 0.01% sodium azide.
Alternative Names	TRAX; Translin-associated protein X; Translin-associated factor X
Gene Symbol	TSNAX
Entrez Gene	7257(Human); 53424(Mouse); 64028(Rat)
SwissProt	Q99598(Human); Q9QZE7(Mouse); Q9JHB5(Rat)

*AREX continuously optimizes our products. Webpage content may not reflect the latest updates. For inquiries, please contact info@arexbio.com or your local distributor.

*Clone Number, Reactivity, Source/Host and Clonality can be found in the product name and Key Features section above.

DATASHEET**TRAX Rabbit Polyclonal Antibody**

CAT. NO. APA14109

DATA

Western blot analysis of TRAX expression in HeLa (A), SKOV3 (B), mouse brain (C), mouse testis (D) whole cell lysates. (Predicted band size: 33 kD; Observed band size: 33 kD)

STORAGE

Store at 4°C short term. For long term storage, store at -20°C, avoiding freeze/thaw cycles.

NOTE

For Research Use Only. Not for diagnostic, therapeutics, prophylactic or in vivo use.