

**DATASHEET**

**SLC12A7 Rabbit Polyclonal Antibody**

CAT. NO. APA14111

**KEY FEATURES**

Target	SLC12A7	Source / Host	Rabbit
Reactivity	Human, Mouse, Rat	Clonality	Polyclonal
Applications	WB	Conjugation	Unconjugated
Form / Buffer	Liquid in 0.42% Potassium phosphate, 0.87% Sodium chloride, pH 7.3, 30% glycerol, and 0.01% sodium azide.		Storage at -20°C

**BACKGROUND**

Mediates electroneutral potassium-chloride cotransport when activated by cell swelling . May mediate K(+) uptake into Deiters' cells in the cochlea and contribute to K(+) recycling in the inner ear. Important for the survival of cochlear outer and inner hair cells and the maintenance of the organ of Corti. May be required for basolateral Cl(-) extrusion in the kidney and contribute to renal acidification .

**APPLICATION**

To ensure optimal assay performance, AREX recommends conducting reagent titration tailored to each testing system for optimal detection results.

WB	1:500 - 1:2000
----	----------------

\*Results are sample-specific. Please refer to your local assay conditions and test parameters for reference.

**PRODUCT OVERVIEW**

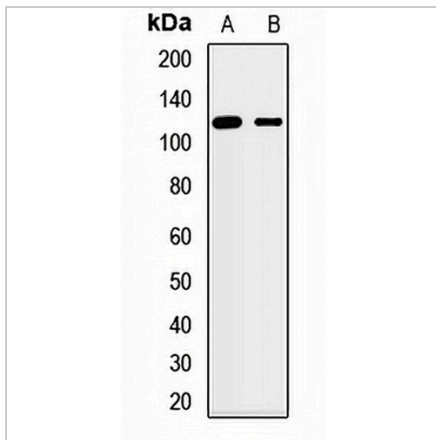
Description	Rabbit polyclonal antibody to SLC12A7
Specificity	Recognizes endogenous levels of SLC12A7 protein.
Antibody Type	Primary antibody
Immunogen	Recombinant fusion protein of human SLC12A7
Purification	The antibody was purified by immunogen affinity chromatography.
Molecular Weight	Predicted: 28; Observed: 119 kD
Form/Buffer	Liquid in 0.42% Potassium phosphate, 0.87% Sodium chloride, pH 7.3, 30% glycerol, and 0.01% sodium azide.
Alternative Names	KCC4; Solute carrier family 12 member 7; Electroneutral potassium-chloride cotransporter 4; K-Cl cotransporter 4
Gene Symbol	SLC12A7
Entrez Gene	10723(Human); 20499(Mouse); 308069(Rat)
SwissProt	Q9Y666(Human); Q9WVL3(Mouse); Q5RK27(Rat)

\*AREX continuously optimizes our products. Webpage content may not reflect the latest updates. For inquiries, please contact [info@arexbio.com](mailto:info@arexbio.com) or your local distributor.

\*Clone Number, Reactivity, Source/Host and Clonality can be found in the product name and Key Features section above.

**DATASHEET****SLC12A7 Rabbit Polyclonal Antibody**

CAT. NO. APA14111

**DATA**

Western blot analysis of SLC12A7 expression in HeLa (A), Jurkat (B) whole cell lysates.  
(Predicted band size: 28; 119 kD; Observed band size: 119 kD)

**STORAGE**

Store at 4°C short term. For long term storage, store at -20°C, avoiding freeze/thaw cycles.

**NOTE**

For Research Use Only. Not for diagnostic, therapeutics, prophylactic or in vivo use.