

DATASHEET

MTMR5 Rabbit Polyclonal Antibody

CAT. NO. APA14115

KEY FEATURES

Target	MTMR5	Source / Host	Rabbit
Reactivity	Human, Rat	Clonality	Polyclonal
Applications	WB	Conjugation	Unconjugated
Form / Buffer	Liquid in 0.42% Potassium phosphate, 0.87% Sodium chloride, pH 7.3, 30% glycerol, and 0.01% sodium azide.		Storage at -20°C

BACKGROUND

Acts as an adapter for the phosphatase MTMR2 to regulate MTMR2 catalytic activity and subcellular location . Promotes the exchange of GDP to GTP, converting inactive GDP-bound Rab proteins into their active GTP-bound form . May function as a guanine nucleotide exchange factor (GEF) activating RAB28 . Acts as a suppressor of autophagy in neurons . Together with its binding partner, the phosphatase MTMR2, plays a role in dephosphorylation of phosphoinositides critical for autophagy initiation and autophagosome maturation . Plays a role in positively regulating late-stage radial sorting of large caliber axons, a process leading to myelination by Schwann cells, possibly via regulating endosomal trafficking .

APPLICATION

To ensure optimal assay performance, AREX recommends conducting reagent titration tailored to each testing system for optimal detection results.

WB	1:500 - 1:2000
----	----------------

*Results are sample-specific. Please refer to your local assay conditions and test parameters for reference.

PRODUCT OVERVIEW

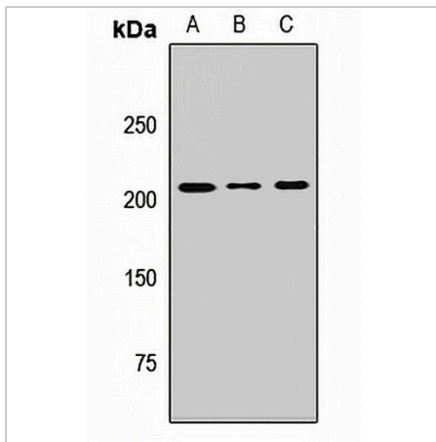
Description	Rabbit polyclonal antibody to MTMR5
Specificity	Recognizes endogenous levels of MTMR5 protein.
Antibody Type	Primary antibody
Immunogen	Recombinant fusion protein of human MTMR5
Purification	The antibody was purified by immunogen affinity chromatography.
Molecular Weight	Predicted: 208; Observed: 208 kD
Form/Buffer	Liquid in 0.42% Potassium phosphate, 0.87% Sodium chloride, pH 7.3, 30% glycerol, and 0.01% sodium azide.
Alternative Names	MTMR5; Myotubularin-related protein 5; SET-binding factor 1; Sbf1
Gene Symbol	SBF1
Entrez Gene	6305(Human)
SwissProt	O95248(Human)

*AREX continuously optimizes our products. Webpage content may not reflect the latest updates. For inquiries, please contact info@arexbio.com or your local distributor.

*Clone Number, Reactivity, Source/Host and Clonality can be found in the product name and Key Features section above.

DATASHEET**MTMR5 Rabbit Polyclonal Antibody**

CAT. NO. APA14115

DATA

Western blot analysis of MTMR5 expression in Raji (A), Jurkat (B), rat brain (C) whole cell lysates. (Predicted band size: 208; 211 kD; Observed band size: 208 kD)

STORAGE

Store at 4°C short term. For long term storage, store at -20°C, avoiding freeze/thaw cycles.

NOTE

For Research Use Only. Not for diagnostic, therapeutics, prophylactic or in vivo use.