

DATASHEET

Spectrin alpha I Rabbit Polyclonal Antibody

CAT. NO. APA14116

KEY FEATURES

Target	Spectrin alpha I	Source / Host	Rabbit
Reactivity	Human, Mouse, Rat	Clonality	Polyclonal
Applications	WB, IHC, IF/ICC	Conjugation	Unconjugated
Form / Buffer	Liquid in 0.42% Potassium phosphate, 0.87% Sodium chloride, pH 7.3, 30% glycerol, and 0.01% sodium azide.	Storage	at-20°C

BACKGROUND

Spectrin is the major constituent of the cytoskeletal network underlying the erythrocyte plasma membrane. It associates with band 4.1 and actin to form the cytoskeletal superstructure of the erythrocyte plasma membrane.

APPLICATION

To ensure optimal assay performance, AREX recommends conducting reagent titration tailored to each testing system for optimal detection results.

WB	1:500 - 1:2000
IHC	1:50 - 1:200
IF/ICC	1:50 - 1:200

*Results are sample-specific. Please refer to your local assay conditions and test parameters for reference.

PRODUCT OVERVIEW

Description	Rabbit polyclonal antibody to Spectrin alpha I
Specificity	Recognizes endogenous levels of Spectrin alpha I protein.
Antibody Type	Primary antibody
Immunogen	Recombinant fusion protein of human Spectrin alpha I
Purification	The antibody was purified by immunogen affinity chromatography.
Molecular Weight	Predicted: 279; Observed: 300 kD
Form/Buffer	Liquid in 0.42% Potassium phosphate, 0.87% Sodium chloride, pH 7.3, 30% glycerol, and 0.01% sodium azide.
Alternative Names	SPTA; Spectrin alpha chain, erythrocytic 1; Erythroid alpha-spectrin
Gene Symbol	SPTA1
Entrez Gene	6708(Human); 20739(Mouse)
SwissProt	P02549(Human); P08032(Mouse)

*AREX continuously optimizes our products. Webpage content may not reflect the latest updates. For inquiries, please contact info@arexbio.com or your local distributor.

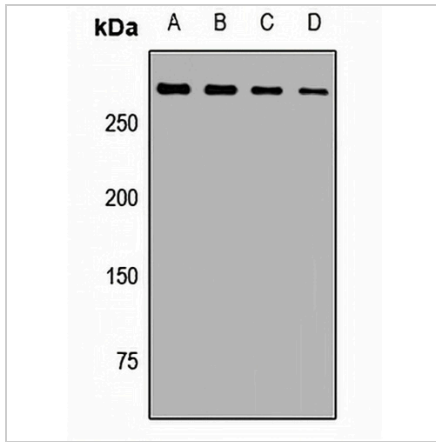
*Clone Number, Reactivity, Source/Host and Clonality can be found in the product name and Key Features section above.

DATASHEET

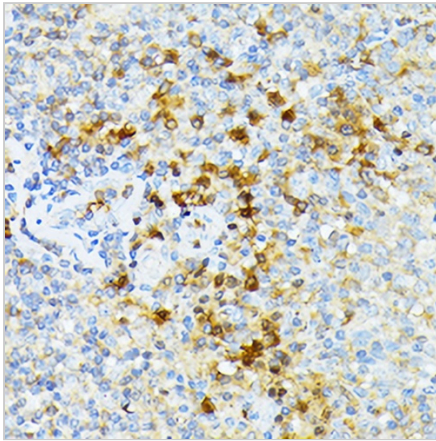
Spectrin alpha I Rabbit Polyclonal Antibody

CAT. NO. APA14116

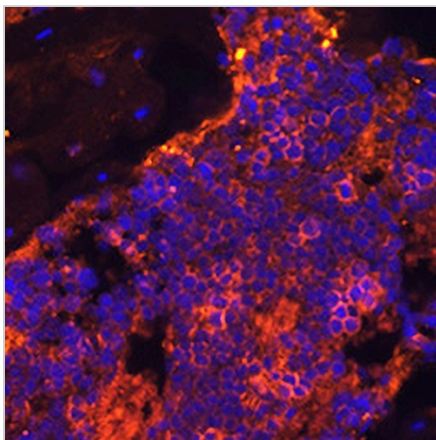
DATA



Western blot analysis of Spectrin alpha I expression in A549 (A), mouse liver (B), mouse lung (C), rat heart (D) whole cell lysates. (Predicted band size: 279; 280 kD; Observed band size: 300 kD)



Immunohistochemical analysis of Spectrin alpha I staining in human tonsil formalin fixed paraffin embedded tissue section. The section was pre-treated using heat mediated antigen retrieval with sodium citrate buffer (pH 6.0). The section was then incubated with the antibody at room temperature and detected using an HRP conjugated compact polymer system. DAB was used as the chromogen. The section was then counterstained with haematoxylin and mounted with DPX.



Immunofluorescent analysis of Spectrin alpha I staining in rat bone marrow . Formalin-fixed cells were permeabilized with 0.1% Triton X-100 in TBS for 5-10 minutes and blocked with 3% BSA-PBS for 30 minutes at room temperature. Cells were probed with the primary antibody in 3% BSA-PBS and incubated overnight at 4 °C in a humidified chamber. Cells were washed with PBST and incubated with a AREX® Fluor 594-conjugated secondary antibody (red) in PBS at room temperature in the dark. DAPI was used to stain the cell nuclei (blue).

STORAGE

Store at 4°C short term. For long term storage, store at -20°C, avoiding freeze/thaw cycles.

NOTE

For Research Use Only. Not for diagnostic, therapeutics, prophylactic or in vivo use.