

DATASHEET

PLSCR3 Rabbit Polyclonal Antibody

CAT. NO. APA14118

KEY FEATURES

Target	PLSCR3	Source / Host	Rabbit
Reactivity	Human, Mouse, Rat	Clonality	Polyclonal
Applications	WB, IF/ICC	Conjugation	Unconjugated
Form / Buffer	Liquid in 0.42% Potassium phosphate, 0.87% Sodium chloride, pH 7.3, 30% glycerol, and 0.01% sodium azide.		Storage at -20°C

BACKGROUND

Catalyzes calcium-induced ATP-independent rapid bidirectional and non-specific movement of the phospholipids (lipid scrambling or lipid flip-flop) between the inner and outer membrane of the mitochondria between the inner and outer membrane of the mitochondria . Plays an important role in mitochondrial respiratory function, morphology, and apoptotic response . Mediates the translocation of cardiolipin from the mitochondrial inner membrane to outer membrane enhancing t-Bid induced cytochrome c release and apoptosis . Enhances TNFSF10-induced apoptosis by regulating the distribution of cardiolipin in the mitochondrial membrane resulting in increased release of apoptogenic factors and consequent amplification of the activity of caspases .

APPLICATION

To ensure optimal assay performance, AREX recommends conducting reagent titration tailored to each testing system for optimal detection results.

WB	1:500 - 1:2000
IF/ICC	1:50 - 1:200

*Results are sample-specific. Please refer to your local assay conditions and test parameters for reference.

PRODUCT OVERVIEW

Description	Rabbit polyclonal antibody to PLSCR3
Specificity	Recognizes endogenous levels of PLSCR3 protein.
Antibody Type	Primary antibody
Immunogen	Recombinant fusion protein of human PLSCR3
Purification	The antibody was purified by immunogen affinity chromatography.
Molecular Weight	Predicted: 31 kD; Observed: 32 kD
Form/Buffer	Liquid in 0.42% Potassium phosphate, 0.87% Sodium chloride, pH 7.3, 30% glycerol, and 0.01% sodium azide.
Alternative Names	Phospholipid scramblase 3; PL scramblase 3; Ca(2+)-dependent phospholipid scramblase 3
Gene Symbol	PLSCR3
Entrez Gene	57048(Human); 70310(Mouse); 360549(Rat)
SwissProt	Q9NRY6(Human); Q9JIZ9(Mouse); Q6QBQ4(Rat)

*AREX continuously optimizes our products. Webpage content may not reflect the latest updates. For inquiries, please contact info@arexbio.com or your local distributor.

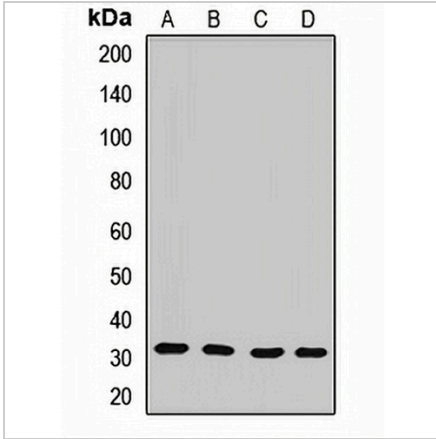
*Clone Number, Reactivity, Source/Host and Clonality can be found in the product name and Key Features section above.

DATASHEET

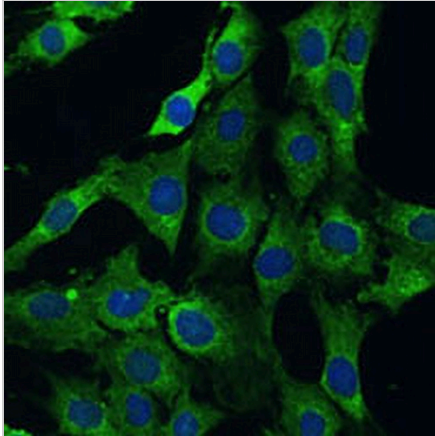
PLSCR3 Rabbit Polyclonal Antibody

CAT. NO. APA14118

DATA



Western blot analysis of PLSCR3 expression in HepG2 (A), HeLa (B), mouse brain (C), mouse heart (D) whole cell lysates. (Predicted band size: 31 kD; Observed band size: 32 kD)



Immunofluorescent analysis of PLSCR3 staining in C6 cells. Formalin-fixed cells were permeabilized with 0.1% Triton X-100 in TBS for 5-10 minutes and blocked with 3% BSA-PBS for 30 minutes at room temperature. Cells were probed with the primary antibody in 3% BSA-PBS and incubated overnight at 4 °C in a humidified chamber. Cells were washed with PBST and incubated with a AREX® Fluor 488 -conjugated secondary antibody (green) in PBS at room temperature in the dark. DAPI was used to stain the cell nuclei (blue).

STORAGE

Store at 4°C short term. For long term storage, store at -20°C, avoiding freeze/thaw cycles.

NOTE

For Research Use Only. Not for diagnostic, therapeutics, prophylactic or in vivo use.