

DATASHEET

MCT2 Rabbit Polyclonal Antibody

CAT. NO. APA14121

KEY FEATURES

Target	MCT2	Source / Host	Rabbit
Reactivity	Human, Mouse, Rat	Clonality	Polyclonal
Applications	WB	Conjugation	Unconjugated
Form / Buffer	Liquid in 0.42% Potassium phosphate, 0.87% Sodium chloride, pH 7.3, 30% glycerol, and 0.01% sodium azide.		Storage at -20°C

BACKGROUND

Proton-coupled monocarboxylate symporter. Catalyzes the rapid transport across the plasma membrane of monocarboxylates such as L-lactate, pyruvate and ketone bodies, acetoacetate, beta-hydroxybutyrate and acetate. Dimerization is functionally required and both subunits work cooperatively in transporting substrate.

APPLICATION

To ensure optimal assay performance, AREX recommends conducting reagent titration tailored to each testing system for optimal detection results.

WB	1:500 - 1:2000
----	----------------

*Results are sample-specific. Please refer to your local assay conditions and test parameters for reference.

PRODUCT OVERVIEW

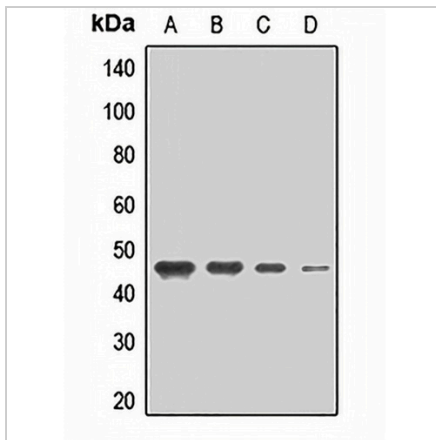
Description	Rabbit polyclonal antibody to MCT2
Specificity	Recognizes endogenous levels of MCT2 protein.
Antibody Type	Primary antibody
Immunogen	KLH-conjugated synthetic peptide of human MCT2
Purification	The antibody was purified by immunogen affinity chromatography.
Molecular Weight	Predicted: 52 kD; Observed: 45 kD
Form/Buffer	Liquid in 0.42% Potassium phosphate, 0.87% Sodium chloride, pH 7.3, 30% glycerol, and 0.01% sodium azide.
Alternative Names	MCT2; Monocarboxylate transporter 2; MCT 2; Solute carrier family 16 member 7
Gene Symbol	SLC16A7
Entrez Gene	9194(Human); 20503(Mouse)
SwissProt	O60669(Human); O70451(Mouse); Q63344(Rat)

*AREX continuously optimizes our products. Webpage content may not reflect the latest updates. For inquiries, please contact info@arexbio.com or your local distributor.

*Clone Number, Reactivity, Source/Host and Clonality can be found in the product name and Key Features section above.

DATASHEET**MCT2 Rabbit Polyclonal Antibody**

CAT. NO. APA14121

DATA

Western blot analysis of MCT2 expression in HepG2 (A), HL60 (B), mouse kidney (C), rat brain (D) whole cell lysates. (Predicted band size: 52 kD; Observed band size: 45 kD)

STORAGE

Store at 4°C short term. For long term storage, store at -20°C, avoiding freeze/thaw cycles.

NOTE

For Research Use Only. Not for diagnostic, therapeutics, prophylactic or in vivo use.