

DATASHEET

TRPC1 Rabbit Polyclonal Antibody

CAT. NO. APA14125

KEY FEATURES

| | | | |
|---------------|-----------------------------------------------------------------------------------------------------------|---------------|--------------------|
| Target | TRPC1 | Source / Host | Rabbit |
| Reactivity | Human, Mouse, Rat | Clonality | Polyclonal |
| Applications | WB, IHC | Conjugation | Unconjugated |
| Form / Buffer | Liquid in 0.42% Potassium phosphate, 0.87% Sodium chloride, pH 7.3, 30% glycerol, and 0.01% sodium azide. | | Storage at-20°C |

BACKGROUND

Forms a receptor-activated non-selective calcium permeant cation channel . Forms a heteromeric ion channel with TRPC4 or TRPC5 that has reduced calcium permeability compared to the homomeric TRPC4 or TRPC5 channel . Also permeable to monovalent ions including sodium, lithium and cesium ions .

APPLICATION

To ensure optimal assay performance, AREX recommends conducting reagent titration tailored to each testing system for optimal detection results.

| | |
|-----|----------------|
| WB | 1:500 - 1:2000 |
| IHC | 1:50 - 1:200 |

*Results are sample-specific. Please refer to your local assay conditions and test parameters for reference.

PRODUCT OVERVIEW

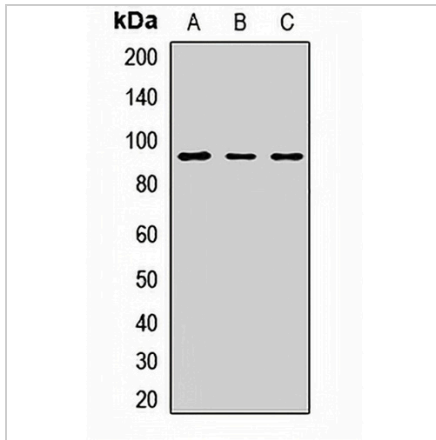
| | |
|-------------------|-----------------------------------------------------------------------------------------------------------|
| Description | Rabbit polyclonal antibody to TRPC1 |
| Specificity | Recognizes endogenous levels of TRPC1 protein. |
| Antibody Type | Primary antibody |
| Immunogen | KLH-conjugated synthetic peptide of human TRPC1 |
| Purification | The antibody was purified by immunogen affinity chromatography. |
| Molecular Weight | Predicted: 87; Observed: 90 kD |
| Form/Buffer | Liquid in 0.42% Potassium phosphate, 0.87% Sodium chloride, pH 7.3, 30% glycerol, and 0.01% sodium azide. |
| Alternative Names | TRP1; Short transient receptor potential channel 1; TrpC1; Transient receptor protein 1; TRP-1 |
| Gene Symbol | TRPC1 |
| Entrez Gene | 7220(Human); 22063(Mouse); 89821(Rat) |
| SwissProt | P48995(Human); Q61056(Mouse); Q9QX01(Rat) |

*AREX continuously optimizes our products. Webpage content may not reflect the latest updates. For inquiries, please contact info@arexbio.com or your local distributor.

*Clone Number, Reactivity, Source/Host and Clonality can be found in the product name and Key Features section above.

DATASHEET**TRPC1 Rabbit Polyclonal Antibody**

CAT. NO. APA14125

DATA

Western blot analysis of TRPC1 expression in MCF7 (A), SKOV3 (B), mouse kidney (C) whole cell lysates. (Predicted band size: 87; 91 kD; Observed band size: 90 kD)

STORAGE

Store at 4°C short term. For long term storage, store at -20°C, avoiding freeze/thaw cycles.

NOTE

For Research Use Only. Not for diagnostic, therapeutics, prophylactic or in vivo use.