

DATASHEET

PON1 Rabbit Polyclonal Antibody

CAT. NO. APA14130

KEY FEATURES

Target	PON1	Source / Host	Rabbit
Reactivity	Human, Mouse, Rat	Clonality	Polyclonal
Applications	WB	Conjugation	Unconjugated
Form / Buffer	Liquid in 0.42% Potassium phosphate, 0.87% Sodium chloride, pH 7.3, 30% glycerol, and 0.01% sodium azide.		Storage at -20°C

BACKGROUND

Hydrolyzes the toxic metabolites of a variety of organophosphorus insecticides. Capable of hydrolyzing a broad spectrum of organophosphate substrates and lactones, and a number of aromatic carboxylic acid esters. Mediates an enzymatic protection of low density lipoproteins against oxidative modification and the consequent series of events leading to atheroma formation.

APPLICATION

To ensure optimal assay performance, AREX recommends conducting reagent titration tailored to each testing system for optimal detection results.

WB	1:500 - 1:1000
----	----------------

*Results are sample-specific. Please refer to your local assay conditions and test parameters for reference.

PRODUCT OVERVIEW

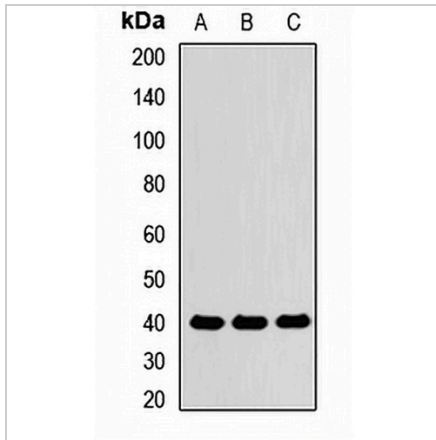
Description	Rabbit polyclonal antibody to PON1
Specificity	Recognizes endogenous levels of PON1 protein.
Antibody Type	Primary antibody
Immunogen	KLH-conjugated synthetic peptide of human PON1
Purification	The antibody was purified by immunogen affinity chromatography.
Molecular Weight	Predicted: 39 kD; Observed: 52 kD
Form/Buffer	Liquid in 0.42% Potassium phosphate, 0.87% Sodium chloride, pH 7.3, 30% glycerol, and 0.01% sodium azide.
Alternative Names	PON; Serum paraoxonase/arylesterase 1; PON 1; Aromatic esterase 1; A-esterase 1; K-45; Serum arylalkylphosphatase 1
Gene Symbol	PON1
Entrez Gene	5444(Human); 18979(Mouse); 84024(Rat)
SwissProt	P27169(Human); P52430(Mouse); P55159(Rat)

*AREX continuously optimizes our products. Webpage content may not reflect the latest updates. For inquiries, please contact info@arexbio.com or your local distributor.

*Clone Number, Reactivity, Source/Host and Clonality can be found in the product name and Key Features section above.

DATASHEET**PON1 Rabbit Polyclonal Antibody**

CAT. NO. APA14130

DATA

Western blot analysis of PON1 expression in Kidney (A), Ovary cancer (B), Liver (C) whole cell lysates. (Predicted band size: 39 kD; Observed band size: 52 kD)

STORAGE

Store at 4°C short term. For long term storage, store at -20°C, avoiding freeze/thaw cycles.

NOTE

For Research Use Only. Not for diagnostic, therapeutics, prophylactic or in vivo use.