

DATASHEET

Apolipoprotein B Rabbit Polyclonal Antibody

CAT. NO. APA14131

KEY FEATURES

Target	Apolipoprotein B	Source / Host	Rabbit
Reactivity	Human, Mouse, Rat	Clonality	Polyclonal
Applications	WB, IF/ICC	Conjugation	Unconjugated
Form / Buffer	Liquid in 0.42% Potassium phosphate, 0.87% Sodium chloride, pH 7.3, 30% glycerol, and 0.01% sodium azide.		Storage at -20°C

BACKGROUND

Apolipoprotein B is a major protein constituent of chylomicrons (apo B-48), LDL (apo B-100) and VLDL (apo B-100). Apo B-100 functions as a recognition signal for the cellular binding and internalization of LDL particles by the apoB/E receptor.

APPLICATION

To ensure optimal assay performance, AREX recommends conducting reagent titration tailored to each testing system for optimal detection results.

WB	1:500 - 1:2000
IF/ICC	1:50 - 1:200

*Results are sample-specific. Please refer to your local assay conditions and test parameters for reference.

PRODUCT OVERVIEW

Description	Rabbit polyclonal antibody to Apolipoprotein B
Specificity	Recognizes endogenous levels of Apolipoprotein B protein.
Antibody Type	Primary antibody
Immunogen	Recombinant fusion protein of human Apolipoprotein B
Purification	The antibody was purified by immunogen affinity chromatography.
Molecular Weight	Predicted: 515 kD; Observed: 100 kD
Form/Buffer	Liquid in 0.42% Potassium phosphate, 0.87% Sodium chloride, pH 7.3, 30% glycerol, and 0.01% sodium azide.
Alternative Names	Apolipoprotein B-100; Apo B-100
Gene Symbol	APOB
Entrez Gene	338(Human); 238055(Mouse); 54225(Rat)
SwissProt	P04114(Human); E9Q414(Mouse); Q7TMA5(Rat)

*AREX continuously optimizes our products. Webpage content may not reflect the latest updates. For inquiries, please contact info@arexbio.com or your local distributor.

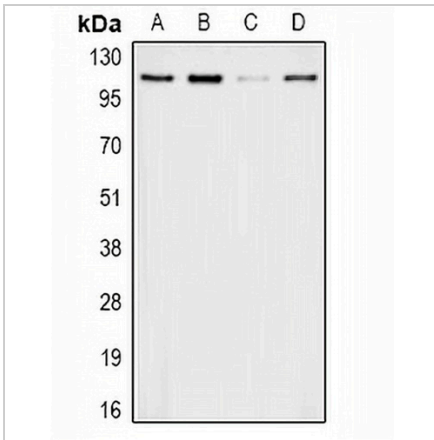
*Clone Number, Reactivity, Source/Host and Clonality can be found in the product name and Key Features section above.

DATASHEET

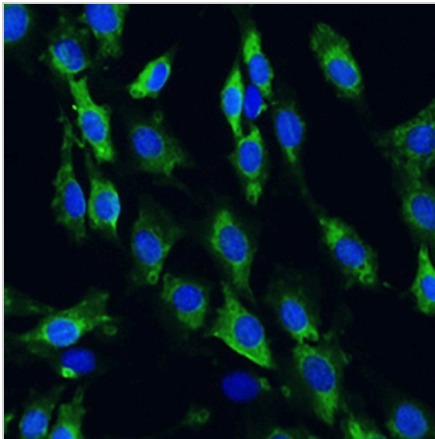
Apolipoprotein B Rabbit Polyclonal Antibody

CAT. NO. APA14131

DATA



Western blot analysis of Apolipoprotein B expression in HepG2 (A), HL60 (B), mouse liver (C), rat kidney (D) whole cell lysates. (Predicted band size: 515 kD; Observed band size: 100 kD)



Immunofluorescent analysis of Apolipoprotein B staining in C6 cells. Formalin-fixed cells were permeabilized with 0.1% Triton X-100 in TBS for 5-10 minutes and blocked with 3% BSA-PBS for 30 minutes at room temperature. Cells were probed with the primary antibody in 3% BSA-PBS and incubated overnight at 4 °C in a humidified chamber. Cells were washed with PBST and incubated with a AREX® Fluor 488 -conjugated secondary antibody (green) in PBS at room temperature in the dark. DAPI was used to stain the cell nuclei (blue).

STORAGE

Store at 4°C short term. For long term storage, store at -20°C, avoiding freeze/thaw cycles.

NOTE

For Research Use Only. Not for diagnostic, therapeutics, prophylactic or in vivo use.