

DATASHEET

Ghrelin Rabbit Polyclonal Antibody

CAT. NO. APA14132

KEY FEATURES

Target	Ghrelin	Source / Host	Rabbit
Reactivity	Human	Clonality	Polyclonal
Applications	WB, IHC	Conjugation	Unconjugated
Form / Buffer	Liquid in 0.42% Potassium phosphate, 0.87% Sodium chloride, pH 7.3, 30% glycerol, and 0.01% sodium azide.		Storage at -20°C

BACKGROUND

Precursor of the appetite-regulating peptide ghrelin, including ghrelin-27 and ghrelin-28.

APPLICATION

To ensure optimal assay performance, AREX recommends conducting reagent titration tailored to each testing system for optimal detection results.

WB	1:500 - 1:2000
IHC	1:50 - 1:200

*Results are sample-specific. Please refer to your local assay conditions and test parameters for reference.

PRODUCT OVERVIEW

Description	Rabbit polyclonal antibody to Ghrelin
Specificity	Recognizes endogenous levels of Ghrelin protein.
Antibody Type	Primary antibody
Immunogen	Recombinant fusion protein of human Ghrelin
Purification	The antibody was purified by immunogen affinity chromatography.
Molecular Weight	Predicted: 7; Observed: 15 kD
Form/Buffer	Liquid in 0.42% Potassium phosphate, 0.87% Sodium chloride, pH 7.3, 30% glycerol, and 0.01% sodium azide.
Alternative Names	MTLRP; Appetite-regulating hormone; Growth hormone secretagogue; Growth hormone-releasing peptide; Motilin-related peptide; Protein M46
Gene Symbol	GHRL
Entrez Gene	51738(Human)
SwissProt	Q9UBU3(Human)

*AREX continuously optimizes our products. Webpage content may not reflect the latest updates. For inquiries, please contact info@arexbio.com or your local distributor.

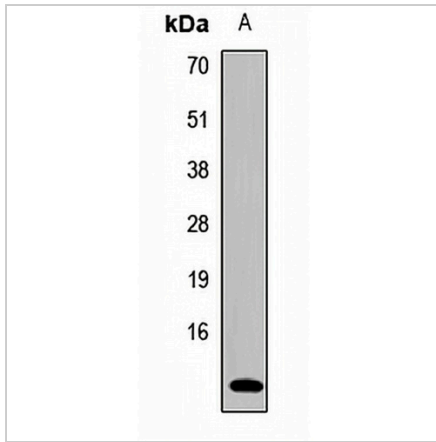
*Clone Number, Reactivity, Source/Host and Clonality can be found in the product name and Key Features section above.

DATASHEET

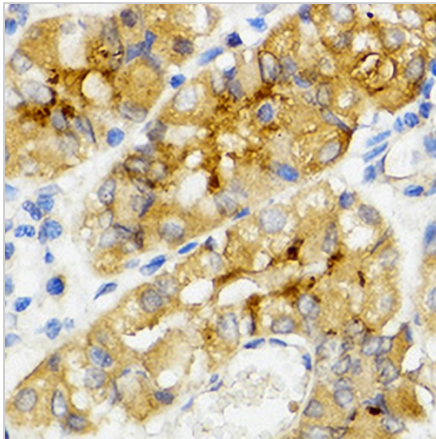
Ghrelin Rabbit Polyclonal Antibody

CAT. NO. APA14132

DATA



Western blot analysis of Ghrelin expression in Hela (A) whole cell lysates. (Predicted band size: 7; 9; 11; 12 kD; Observed band size: 15 kD)



Immunohistochemical analysis of Ghrelin staining in human stomach formalin fixed paraffin embedded tissue section. The section was pre-treated using heat mediated antigen retrieval with sodium citrate buffer (pH 6.0). The section was then incubated with the antibody at room temperature and detected using an HRP conjugated compact polymer system. DAB was used as the chromogen. The section was then counterstained with haematoxylin and mounted with DPX.

STORAGE

Store at 4°C short term. For long term storage, store at -20°C, avoiding freeze/thaw cycles.

NOTE

For Research Use Only. Not for diagnostic, therapeutics, prophylactic or in vivo use.