

DATASHEET

CETP Rabbit Polyclonal Antibody

CAT. NO. APA14133

KEY FEATURES

Target	CETP	Source / Host	Rabbit
Reactivity	Human	Clonality	Polyclonal
Applications	WB, IHC	Conjugation	Unconjugated
Form / Buffer	Liquid in 0.42% Potassium phosphate, 0.87% Sodium chloride, pH 7.3, 30% glycerol, and 0.01% sodium azide.		Storage at -20°C

BACKGROUND

Involved in the transfer of neutral lipids, including cholesteryl ester and triglyceride, among lipoprotein particles. Allows the net movement of cholesteryl ester from high density lipoproteins/HDL to triglyceride-rich very low density lipoproteins/VLDL, and the equimolar transport of triglyceride from VLDL to HDL . Regulates the reverse cholesterol transport, by which excess cholesterol is removed from peripheral tissues and returned to the liver for elimination .

APPLICATION

To ensure optimal assay performance, AREX recommends conducting reagent titration tailored to each testing system for optimal detection results.

WB	1:500 - 1:2000
IHC	1:50 - 1:200

*Results are sample-specific. Please refer to your local assay conditions and test parameters for reference.

PRODUCT OVERVIEW

Description	Rabbit polyclonal antibody to CETP
Specificity	Recognizes endogenous levels of CETP protein.
Antibody Type	Primary antibody
Immunogen	Recombinant fusion protein of human CETP
Purification	The antibody was purified by immunogen affinity chromatography.
Molecular Weight	Predicted: 47; Observed: 75 kD
Form/Buffer	Liquid in 0.42% Potassium phosphate, 0.87% Sodium chloride, pH 7.3, 30% glycerol, and 0.01% sodium azide.
Alternative Names	Cholesteryl ester transfer protein; Lipid transfer protein I
Gene Symbol	CETP
Entrez Gene	1071(Human)
SwissProt	P11597(Human)

*AREX continuously optimizes our products. Webpage content may not reflect the latest updates. For inquiries, please contact info@arexbio.com or your local distributor.

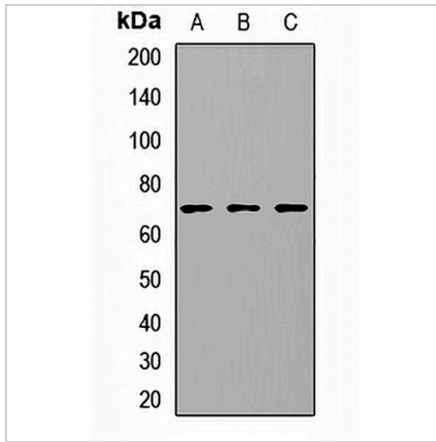
*Clone Number, Reactivity, Source/Host and Clonality can be found in the product name and Key Features section above.

DATASHEET

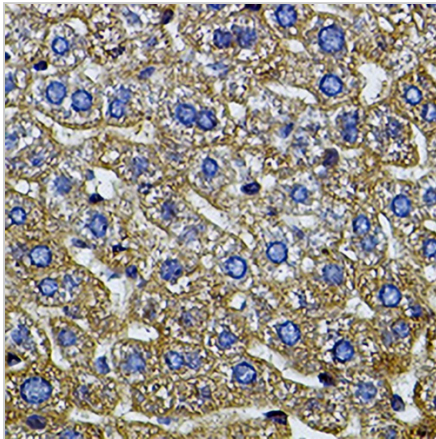
CETP Rabbit Polyclonal Antibody

CAT. NO. APA14133

DATA



Western blot analysis of CETP expression in HeLa (A), Jurkat (B), HepG2 (C) whole cell lysates. (Predicted band size: 47; 54 kD; Observed band size: 75 kD)



Immunohistochemical analysis of CETP staining in mouse liver formalin fixed paraffin embedded tissue section. The section was pre-treated using heat mediated antigen retrieval with sodium citrate buffer (pH 6.0). The section was then incubated with the antibody at room temperature and detected using an HRP conjugated compact polymer system. DAB was used as the chromogen. The section was then counterstained with haematoxylin and mounted with DPX.

STORAGE

Store at 4°C short term. For long term storage, store at -20°C, avoiding freeze/thaw cycles.

NOTE

For Research Use Only. Not for diagnostic, therapeutics, prophylactic or in vivo use.