

DATASHEET

ADH beta Rabbit Polyclonal Antibody

CAT. NO. APA14140

KEY FEATURES

Target	ADH beta	Source / Host	Rabbit
Reactivity	Rat	Clonality	Polyclonal
Applications	WB	Conjugation	Unconjugated
Form / Buffer	Liquid in 0.42% Potassium phosphate, 0.87% Sodium chloride, pH 7.3, 30% glycerol, and 0.01% sodium azide.		Storage at -20°C

BACKGROUND

Catalyzes the NAD-dependent oxidation of all-trans-retinol and its derivatives such as all-trans-4-hydroxyretinol and may participate in retinoid metabolism . In vitro can also catalyze the NADH-dependent reduction of all-trans-retinal and its derivatives such as all-trans-4-oxoretinal . Catalyzes in the oxidative direction with higher efficiency . Has the same affinity for all-trans-4-hydroxyretinol and all-trans-4-oxoretinal .

APPLICATION

To ensure optimal assay performance, AREX recommends conducting reagent titration tailored to each testing system for optimal detection results.

WB	1:500 - 1:2000
----	----------------

*Results are sample-specific. Please refer to your local assay conditions and test parameters for reference.

PRODUCT OVERVIEW

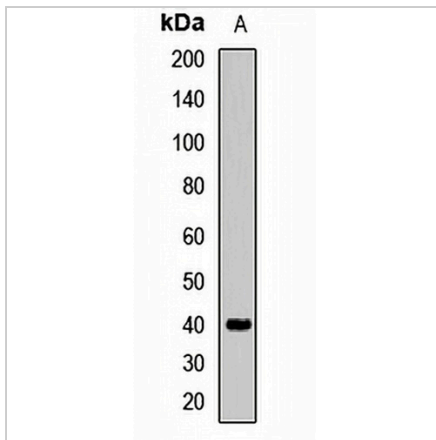
Description	Rabbit polyclonal antibody to ADH beta
Specificity	Recognizes endogenous levels of ADH beta protein.
Antibody Type	Primary antibody
Immunogen	Recombinant fusion protein of human ADH beta
Purification	The antibody was purified by immunogen affinity chromatography.
Molecular Weight	Predicted: 35; Observed: 40 kD
Form/Buffer	Liquid in 0.42% Potassium phosphate, 0.87% Sodium chloride, pH 7.3, 30% glycerol, and 0.01% sodium azide.
Alternative Names	ADH2; Alcohol dehydrogenase 1B; Alcohol dehydrogenase subunit beta
Gene Symbol	ADH1B
Entrez Gene	125(Human)
SwissProt	P00325(Human)

*AREX continuously optimizes our products. Webpage content may not reflect the latest updates. For inquiries, please contact info@arexbio.com or your local distributor.

*Clone Number, Reactivity, Source/Host and Clonality can be found in the product name and Key Features section above.

DATASHEET**ADH beta Rabbit Polyclonal Antibody**

CAT. NO. APA14140

DATA

Western blot analysis of ADH beta expression in rat liver (A) whole cell lysates. (Predicted band size: 35; 39 kD; Observed band size: 40 kD)

STORAGE

Store at 4°C short term. For long term storage, store at -20°C, avoiding freeze/thaw cycles.

NOTE

For Research Use Only. Not for diagnostic, therapeutics, prophylactic or in vivo use.