

## DATASHEET

# CD36L1 Rabbit Polyclonal Antibody

CAT. NO. APA14153

### KEY FEATURES

Target	CD36L1	Source / Host	Rabbit
Reactivity	Human, Mouse, Rat	Clonality	Polyclonal
Applications	WB, IHC	Conjugation	Unconjugated
Form / Buffer	Liquid in 0.42% Potassium phosphate, 0.87% Sodium chloride, pH 7.3, 30% glycerol, and 0.01% sodium azide.		Storage at -20°C

### BACKGROUND

Receptor for different ligands such as phospholipids, cholesterol ester, lipoproteins, phosphatidylserine and apoptotic cells . Receptor for HDL, mediating selective uptake of cholesteryl ether and HDL-dependent cholesterol efflux . Also facilitates the flux of free and esterified cholesterol between the cell surface and apoB-containing lipoproteins and modified lipoproteins, although less efficiently than HDL. May be involved in the phagocytosis of apoptotic cells, via its phosphatidylserine binding activity .

### APPLICATION

To ensure optimal assay performance, AREX recommends conducting reagent titration tailored to each testing system for optimal detection results.

WB	1:500 - 1:1000
IHC	1:50 - 1:200

\*Results are sample-specific. Please refer to your local assay conditions and test parameters for reference.

### PRODUCT OVERVIEW

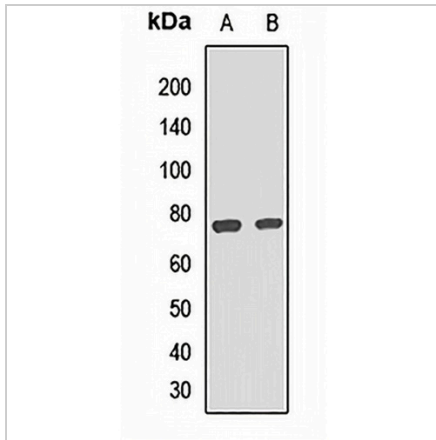
Description	Rabbit polyclonal antibody to CD36L1
Specificity	Recognizes endogenous levels of CD36L1 protein.
Antibody Type	Primary antibody
Immunogen	KLH-conjugated synthetic peptide of human CD36L1
Purification	The antibody was purified by immunogen affinity chromatography.
Molecular Weight	Predicted: 45; Observed: 75 kD
Form/Buffer	Liquid in 0.42% Potassium phosphate, 0.87% Sodium chloride, pH 7.3, 30% glycerol, and 0.01% sodium azide.
Alternative Names	CD36L1; CLA1; Scavenger receptor class B member 1; SRB1; CD36 and LIMPII analogous 1; CLA-1; CD36 antigen-like 1; Collagen type I receptor, thrombospondin receptor-like 1; SR-BI; CD36
Gene Symbol	SCARB1
Entrez Gene	949(Human); 20778(Mouse); 25073(Rat)
SwissProt	Q8WTV0(Human); Q61009(Mouse); P97943(Rat)

\*AREX continuously optimizes our products. Webpage content may not reflect the latest updates. For inquiries, please contact [info@arexbio.com](mailto:info@arexbio.com) or your local distributor.

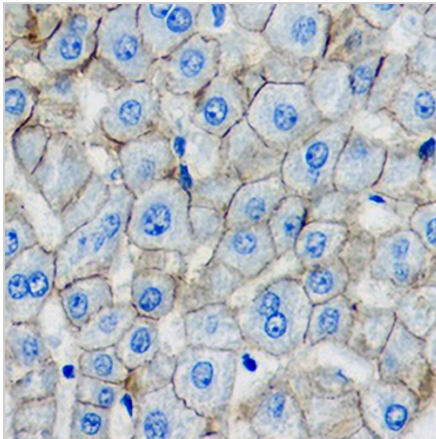
\*Clone Number, Reactivity, Source/Host and Clonality can be found in the product name and Key Features section above.

**DATASHEET****CD36L1 Rabbit Polyclonal Antibody**

CAT. NO. APA14153

**DATA**

Western blot analysis of CD36L1 expression in HT29 (A), rat liver (B) whole cell lysates. (Predicted band size: 45; 53; 56; 60 kD; Observed band size: 75 kD)



Immunohistochemical analysis of CD36L1 staining in human liver formalin fixed paraffin embedded tissue section. The section was pre-treated using heat mediated antigen retrieval with sodium citrate buffer (pH 6.0). The section was then incubated with the antibody at room temperature and detected using an HRP conjugated compact polymer system. DAB was used as the chromogen. The section was then counterstained with haematoxylin and mounted with DPX.

**STORAGE**

Store at 4°C short term. For long term storage, store at -20°C, avoiding freeze/thaw cycles.

**NOTE**

For Research Use Only. Not for diagnostic, therapeutics, prophylactic or in vivo use.