

## DATASHEET

# KNG1 Rabbit Polyclonal Antibody

CAT. NO. APA14161

### KEY FEATURES

Target	KNG1	Source / Host	Rabbit
Reactivity	Human, Mouse, Rat	Clonality	Polyclonal
Applications	WB, IF/ICC	Conjugation	Unconjugated
Form / Buffer	Liquid in 0.42% Potassium phosphate, 0.87% Sodium chloride, pH 7.3, 30% glycerol, and 0.01% sodium azide.		Storage at-20°C

### BACKGROUND

The active peptide bradykinin is a potent vasodilator that is released from HMW-kininogen shows a variety of physiological effects: (A) influence in smooth muscle contraction, (B) induction of hypotension, (C) natriuresis and diuresis, (D) decrease in blood glucose level, (E) it is a mediator of inflammation and causes (E1) increase in vascular permeability, (E2) stimulation of nociceptors (4E3) release of other mediators of inflammation (e.g. prostaglandins), (F) it has a cardioprotective effect (directly via bradykinin action, indirectly via endothelium-derived relaxing factor action).

### APPLICATION

To ensure optimal assay performance, AREX recommends conducting reagent titration tailored to each testing system for optimal detection results.

WB	1:500 - 1:2000
IF/ICC	1:50 - 1:200

\*Results are sample-specific. Please refer to your local assay conditions and test parameters for reference.

### PRODUCT OVERVIEW

Description	Rabbit polyclonal antibody to KNG1
Specificity	Recognizes endogenous levels of KNG1 protein.
Antibody Type	Primary antibody
Immunogen	Recombinant fusion protein of human KNG1
Purification	The antibody was purified by immunogen affinity chromatography.
Molecular Weight	Predicted: 43; Observed: 72 kD
Form/Buffer	Liquid in 0.42% Potassium phosphate, 0.87% Sodium chloride, pH 7.3, 30% glycerol, and 0.01% sodium azide.
Alternative Names	BDK; KNG; Kininogen-1; Alpha-2-thiol proteinase inhibitor; Fitzgerald factor; High molecular weight kininogen; HMWK; Williams-Fitzgerald-Flaujeac factor
Gene Symbol	KNG1
Entrez Gene	3827(Human); 16644(Mouse)
SwissProt	P01042(Human); O08677(Mouse)

\*AREX continuously optimizes our products. Webpage content may not reflect the latest updates. For inquiries, please contact [info@arexbio.com](mailto:info@arexbio.com) or your local distributor.

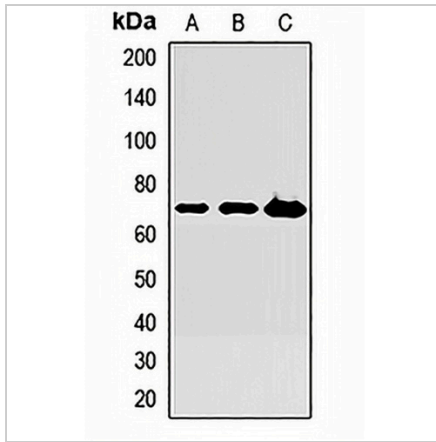
\*Clone Number, Reactivity, Source/Host and Clonality can be found in the product name and Key Features section above.

**DATASHEET**

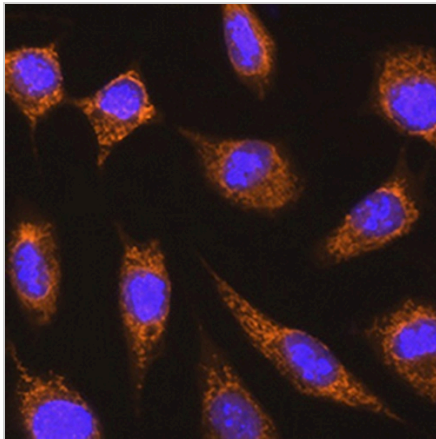
**KNG1 Rabbit Polyclonal Antibody**

CAT. NO. APA14161

**DATA**



Western blot analysis of KNG1 expression in HepG2 (A), mouse liver (B), mouse heart (C) whole cell lysates. (Predicted band size: 43; 47; 71 kD; Observed band size: 72 kD)



Immunofluorescent analysis of KNG1 staining in L929 cells. Formalin-fixed cells were permeabilized with 0.1% Triton X-100 in TBS for 5-10 minutes and blocked with 3% BSA-PBS for 30 minutes at room temperature. Cells were probed with the primary antibody in 3% BSA-PBS and incubated overnight at 4 °C in a humidified chamber. Cells were washed with PBST and incubated with a AREX® Fluor 594-conjugated secondary antibody (red) in PBS at room temperature in the dark. DAPI was used to stain the cell nuclei (blue).

**STORAGE**

Store at 4°C short term. For long term storage, store at -20°C, avoiding freeze/thaw cycles.

**NOTE**

For Research Use Only. Not for diagnostic, therapeutics, prophylactic or in vivo use.