

DATASHEET

ACP1 Rabbit Polyclonal Antibody

CAT. NO. APA14165

KEY FEATURES

Target	ACP1	Source / Host	Rabbit
Reactivity	Human, Mouse, Rat	Clonality	Polyclonal
Applications	WB	Conjugation	Unconjugated
Form / Buffer	Liquid in 0.42% Potassium phosphate, 0.87% Sodium chloride, pH 7.3, 30% glycerol, and 0.01% sodium azide.		Storage at -20°C

BACKGROUND

Acts on tyrosine phosphorylated proteins, low-MW aryl phosphates and natural and synthetic acyl phosphates with differences in substrate specificity between isoform 1 and isoform 2.

APPLICATION

To ensure optimal assay performance, AREX recommends conducting reagent titration tailored to each testing system for optimal detection results.

WB	1:500 - 1:1000
----	----------------

*Results are sample-specific. Please refer to your local assay conditions and test parameters for reference.

PRODUCT OVERVIEW

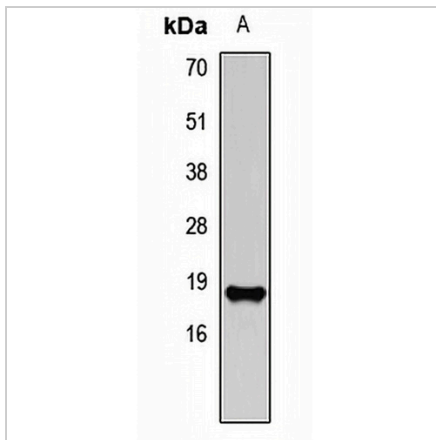
Description	Rabbit polyclonal antibody to ACP1
Specificity	Recognizes endogenous levels of ACP1 protein.
Antibody Type	Primary antibody
Immunogen	Recombinant fusion protein of human ACP1
Purification	The antibody was purified by immunogen affinity chromatography.
Molecular Weight	Predicted: 12; Observed: 18 kD
Form/Buffer	Liquid in 0.42% Potassium phosphate, 0.87% Sodium chloride, pH 7.3, 30% glycerol, and 0.01% sodium azide.
Alternative Names	Low molecular weight phosphotyrosine protein phosphatase; LMW-PTP; LMW-PTPase; Adipocyte acid phosphatase; Low molecular weight cytosolic acid phosphatase; Red cell acid phosphatase 1
Gene Symbol	ACP1
Entrez Gene	52(Human); 102642088; 11431(Mouse); 24161(Rat)
SwissProt	P24666(Human); Q9D358(Mouse); P41498(Rat)

*AREX continuously optimizes our products. Webpage content may not reflect the latest updates. For inquiries, please contact info@arexbio.com or your local distributor.

*Clone Number, Reactivity, Source/Host and Clonality can be found in the product name and Key Features section above.

DATASHEET**ACP1 Rabbit Polyclonal Antibody**

CAT. NO. APA14165

DATA

Western blot analysis of ACP1 expression in mouse liver (A) whole cell lysates. (Predicted band size: 12; 14; 17; 18 kD; Observed band size: 18 kD)

STORAGE

Store at 4°C short term. For long term storage, store at -20°C, avoiding freeze/thaw cycles.

NOTE

For Research Use Only. Not for diagnostic, therapeutics, prophylactic or in vivo use.