

DATASHEET

GGCX Rabbit Polyclonal Antibody

CAT. NO. APA14166

KEY FEATURES

Target	GGCX	Source / Host	Rabbit
Reactivity	Human, Mouse, Rat	Clonality	Polyclonal
Applications	WB	Conjugation	Unconjugated
Form / Buffer	Liquid in 0.42% Potassium phosphate, 0.87% Sodium chloride, pH 7.3, 30% glycerol, and 0.01% sodium azide.		Storage at -20°C

BACKGROUND

Mediates the vitamin K-dependent carboxylation of glutamate residues to calcium-binding gamma-carboxyglutamate (Gla) residues with the concomitant epoxidation of vitamin K hydroquinone to vitamin K epoxide residues with the concomitant epoxidation of vitamin K hydroquinone to vitamin K epoxide . Couples epoxidation and carboxylation in the same active site . Catalyzes gamma-carboxylation of blood coagulation factors (F2, F7, F9 and F10) and anticoagulants such as PROC, which are essential for thrombosis. Catalyzes gamma-carboxylation of osteocalcin/BGLAP, which is essential for bone metabolism . Catalyzes gamma-carboxylation of matrix Gla protein (MGP) and other transmembrane gamma-Gla proteins such as PRRG2, which are essential for calcium homeostasis and haemostasis .

APPLICATION

To ensure optimal assay performance, AREX recommends conducting reagent titration tailored to each testing system for optimal detection results.

WB	1:500 - 1:2000
----	----------------

*Results are sample-specific. Please refer to your local assay conditions and test parameters for reference.

PRODUCT OVERVIEW

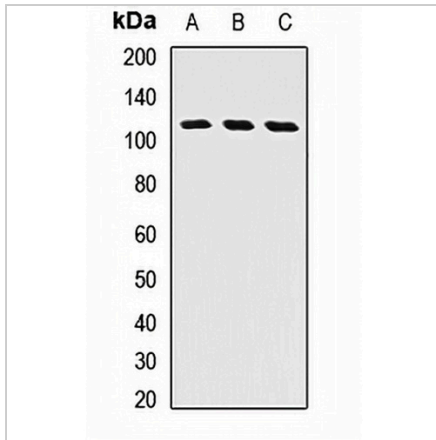
Description	Rabbit polyclonal antibody to GGCX
Specificity	Recognizes endogenous levels of GGCX protein.
Antibody Type	Primary antibody
Immunogen	Recombinant fusion protein of human GGCX
Purification	The antibody was purified by immunogen affinity chromatography.
Molecular Weight	Predicted: 80; Observed: 110 kD
Form/Buffer	Liquid in 0.42% Potassium phosphate, 0.87% Sodium chloride, pH 7.3, 30% glycerol, and 0.01% sodium azide.
Alternative Names	GC; Vitamin K-dependent gamma-carboxylase; Gamma-glutamyl carboxylase; Peptidyl-glutamate 4-carboxylase; Vitamin K gamma glutamyl carboxylase
Gene Symbol	GGCX
Entrez Gene	2677(Human); 56316(Mouse); 81716(Rat)
SwissProt	P38435(Human); Q9QYC7(Mouse); O88496(Rat)

*AREX continuously optimizes our products. Webpage content may not reflect the latest updates. For inquiries, please contact info@arexbio.com or your local distributor.

*Clone Number, Reactivity, Source/Host and Clonality can be found in the product name and Key Features section above.

DATASHEET**GGCX Rabbit Polyclonal Antibody**

CAT. NO. APA14166

DATA

Western blot analysis of GGCX expression in MCF7 (A), HeLa (B), mouse liver (C) whole cell lysates. (Predicted band size: 80; 87 kD; Observed band size: 110 kD)

STORAGE

Store at 4°C short term. For long term storage, store at -20°C, avoiding freeze/thaw cycles.

NOTE

For Research Use Only. Not for diagnostic, therapeutics, prophylactic or in vivo use.