

DATASHEET

POLR2F Rabbit Polyclonal Antibody

CAT. NO. APA14167

KEY FEATURES

Target	POLR2F	Source / Host	Rabbit
Reactivity	Human, Mouse, Rat	Clonality	Polyclonal
Applications	WB	Conjugation	Unconjugated
Form / Buffer	Liquid in 0.42% Potassium phosphate, 0.87% Sodium chloride, pH 7.3, 30% glycerol, and 0.01% sodium azide.		Storage at -20°C

BACKGROUND

DNA-dependent RNA polymerase catalyzes the transcription of DNA into RNA using the four ribonucleoside triphosphates as substrates. Common component of RNA polymerases I, II, and III which synthesize ribosomal RNA precursors, mRNA precursors and many functional non-coding RNAs, and small RNAs, such as 5S rRNA and tRNAs, respectively. Pol II is the central component of the basal RNA polymerase II transcription machinery. Pols are composed of mobile elements that move relative to each other. In Pol II, POLR2F/RPABC2 is part of the clamp element and together with parts of POLR2A/RPB1 and POLR2B/RPB2 forms a pocket to which the POLR2D/RPB4-POLR2G/RPB7 subcomplex binds.

APPLICATION

To ensure optimal assay performance, AREX recommends conducting reagent titration tailored to each testing system for optimal detection results.

WB	1:500 - 1:1000
----	----------------

*Results are sample-specific. Please refer to your local assay conditions and test parameters for reference.

PRODUCT OVERVIEW

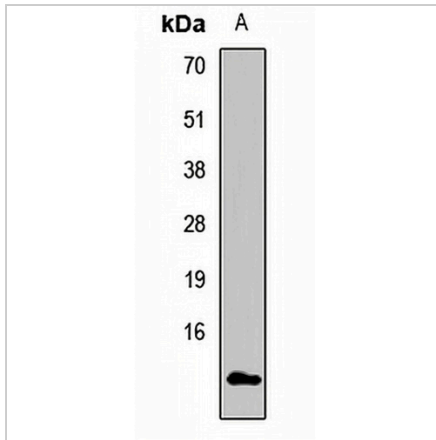
Description	Rabbit polyclonal antibody to POLR2F
Specificity	Recognizes endogenous levels of POLR2F protein.
Antibody Type	Primary antibody
Immunogen	Recombinant fusion protein of human POLR2F
Purification	The antibody was purified by immunogen affinity chromatography.
Molecular Weight	Predicted: 14 kD; Observed: 14 kD
Form/Buffer	Liquid in 0.42% Potassium phosphate, 0.87% Sodium chloride, pH 7.3, 30% glycerol, and 0.01% sodium azide.
Alternative Names	POLRF; DNA-directed RNA polymerases I, II, and III subunit RPABC2; RNA polymerases I, II, and III subunit ABC2; DNA-directed RNA polymerase II subunit F; DNA-directed RNA polymerases I, II, and III 14.4 kDa polypeptide; RPABC14.4; RPB14.4; RPB6 homolog; RPC15
Gene Symbol	POLR2F
Entrez Gene	5435(Human); 69833(Mouse); 83503(Rat)
SwissProt	P61218(Human); P61219(Mouse); O88828(Rat)

*AREX continuously optimizes our products. Webpage content may not reflect the latest updates. For inquiries, please contact info@arexbio.com or your local distributor.

*Clone Number, Reactivity, Source/Host and Clonality can be found in the product name and Key Features section above.

DATASHEET**POLR2F Rabbit Polyclonal Antibody**

CAT. NO. APA14167

DATA

Western blot analysis of POLR2F expression in mouse liver (A) whole cell lysates.
(Predicted band size: 14 kD; Observed band size: 14 kD)

STORAGE

Store at 4°C short term. For long term storage, store at -20°C, avoiding freeze/thaw cycles.

NOTE

For Research Use Only. Not for diagnostic, therapeutics, prophylactic or in vivo use.